

LINKSYS®

A Division of Cisco Systems, Inc.



2.4GHz 802.11g Wireless-G

Broadband Router

User Guide



Model No. **WRT54G**

CISCO SYSTEMS



Copyright and Trademarks

Specifications are subject to change without notice. Linksys is a registered trademark or trademark of Cisco Systems, Inc. and/or its affiliates in the U.S. and certain other countries. Copyright © 2003 Cisco Systems, Inc. All rights reserved. Other brands and product names are trademarks or registered trademarks of their respective holders.

How to Use this User Guide

This User Guide has been designed to make understanding networking with the Wireless-G Broadband Router easier than ever. Look for the following items when reading this User Guide:



This checkmark means there is a note of interest and is something you should pay special attention to while using the Wireless-G Broadband Router.



This exclamation point means there is a caution or warning and is something that could damage your property or the Wireless-G Broadband Router.



This question mark provides you with a reminder about something you might need to do while using the Wireless-G Broadband Router.

In addition to these symbols, there are definitions for technical terms that are presented like this:

word: definition.

Also, each figure (diagram, screenshot, or other image) is provided with a figure number and description, like this:

Figure 0-1: Sample Figure Description

Figure numbers and descriptions can also be found in the “List of Figures” section in the “Table of Contents”.

Table of Contents

Chapter 1: Introduction	1
Welcome	1
What's in this Guide?	2
Chapter 2: Planning your Wireless Network	4
Network Topology	4
Roaming	4
Network Layout	5
Chapter 3: Getting to Know the Wireless-G Broadband Router	6
The Back Panel	6
The Front Panel	7
Chapter 4: Connecting the Wireless-G Broadband Router	8
Hardware Installation	8
Chapter 5: Configuring the PCs	10
Overview	10
Configuring Windows 98 and Millennium PCs	10
Configuring Windows 2000 PCs	11
Configuring Windows XP PCs	12
Chapter 6: Configuring the Wireless-G Broadband Router	14
Overview	14
The Setup Tab - Basic Setup	15
The Setup Tab - DDNS	19
The Setup Tab - MAC Address Clone	20
The Setup Tab - Advanced Routing	21
The Wireless Tab - Basic Wireless Settings	22
The Wireless Tab - Wireless MAC Filter	23
The Wireless Tab - Advanced Wireless Settings	24
The Security Tab - Firewall	26
The Security Tab - VPN Passthrough	26
The Security Tab - Wireless Security	27
The Access Restrictions Tab	29
The Applications and Gaming Tab - Port Range Forward	30
The Applications and Gaming Tab - DMZ	31

The Administration Tab - Management	32
The Administration Tab - Log	32
The Administration Tab - Diagnostics	33
The Administration Tab - Factory Defaults	34
The Administration Tab - Firmware Upgrade	34
The Status Tab - Router	35
The Status Tab - Local Network	36
The Status Tab - Wireless	37
Appendix A: Troubleshooting	38
Common Problems and Solutions	38
Frequently Asked Questions	45
Appendix B: Wireless Security	52
A Brief Overview	52
What Are The Risks?	52
Maximizing Wireless Security	54
Appendix C: Upgrading Firmware	60
Appendix D: Windows Help	61
Appendix E: Finding the MAC Address and IP Address for Your Ethernet Adapter	62
Windows 98 or Me Instructions	62
Windows 2000 or XP Instructions	62
For the Router's Web-based Utility	63
Appendix F: Glossary	64
Appendix G: Specifications	70
Appendix H: Warranty Information	71
Appendix I: Regulatory Information	72
Appendix J: Contact Information	75

List of Figures

Figure 3-1: The Broadband Router's Back Panel	6
Figure 3-2: The Broadband Router's Front Panel	7
Figure 4-1: Connecting Your Internet Connection	8
Figure 4-2: Connecting Your Network Devices	9
Figure 4-3: Connecting the Power	9
Figure 5-1: Configuration Tab	10
Figure 5-2: IP Address Tab	10
Figure 5-3: Properties	11
Figure 5-4: TCP/IP	11
Figure 5-5: IP Address	11
Figure 5-6: Properties	12
Figure 5-7: TCP/IP	12
Figure 5-8: IP Address	13
Figure 6-1: Password Screen	14
Figure 6-2: Setup Tab - Basic Setup	15
Figure 6-3: DHCP Connection Type	15
Figure 6-4: Static IP Connection Type	15
Figure 6-5: PPPoE Connection Type	16
Figure 6-6: PPTP Connection Type	16
Figure 6-7: Optional Settings	17
Figure 6-8: Router IP	17
Figure 6-9: Network Address Server Settings	17
Figure 6-10: Time Setting	18
Figure 6-11: Setup Tab - DDNS	19
Figure 6-12: Setup Tab - MAC Address Clone	20
Figure 6-13: Setup Tab - Advanced Routing (Gateway)	21
Figure 6-14: Setup Tab - Advanced Routing (Router)	21
Figure 6-15: Wireless Tab - Basic Wireless Settings	22
Figure 6-16: Wireless Tab - Wireless MAC Filter	23
Figure 6-17: MAC Address Filter List	23

Figure 6-18: Wireless Tab - Advanced Wireless Settings	24
Figure 6-19: Security Tab - Firewall	26
Figure 6-20: Wireless Tab - Basic Wireless Settings	26
Figure 6-21: Wireless Tab - Wireless Security (WPA Pre-Shared Key)	27
Figure 6-22: Wireless Tab - Wireless Security (WPA Radius)	27
Figure 6-23: Wireless Tab - Wireless Security (Radius)	28
Figure 6-24: Wireless Tab - Wireless Security (WEP)	28
Figure 6-25: Access Restrictions Tab	29
Figure 6-26: Internet Policy Summary	29
Figure 6-27: List of PCs	29
Figure 6-28: Applications and Gaming Tab - Port Range Forward	30
Figure 6-29: Applications and Gaming - DMZ	31
Figure 6-30: Administration Tab - Management	32
Figure 6-31: Administration Tab - Log	32
Figure 6-32: Administration Tab - Diagnostics	33
Figure 6-33: The Ping Test	33
Figure 6-34: The Traceroute Test	33
Figure 6-35: Administration Tab - Factory Defaults	34
Figure 6-36: Administration Tab - Firmware Upgrade	34
Figure 6-37: Status Tab - Router	35
Figure 6-38: Status Tab - Local Network	36
Figure 6-39: Status Tab - Wireless	37
Figure B-1: Warchalking	52
Figure B-2: WEP	58
Figure B-3: Pre-Shared Key	58
Figure B-4: WPA Radius	59
Figure B-5: Radius	59
Figure C-1: Upgrade Firmware	60
Figure E-1: IP Configuration Screen	62
Figure E-2: MAC Address/Adapter Address	62
Figure E-3: MAC Address/Physical Address	63
Figure E-4: MAC Address Filter	63
Figure E-5: MAC Address Clone	63

Chapter 1: Introduction

Welcome

Thank you for choosing the Linksys Wireless-G Broadband Router. The Wireless-G Broadband Router will allow you to network wirelessly better than ever, sharing Internet Access, files and fun, easily and securely.

How does the Wireless-G Broadband Router do all of this? A router is a device that allows access to an Internet connection over a network. With the Wireless-G Broadband Router, this access can be shared over the four switched ports or over via the wireless broadcast at either 11Mbps Wireless-B or 54Mbps Wireless-G. In addition, the Wireless-G standard provides greater security opportunities while the router's switched ports are protected through Stateful Packet Inspection (SPI) and a NAT firewall. All of these security features, as well as full configurability is accessed through the easy to use browser-based utility.

But what does all of this mean?

Networks are useful tools for sharing computer resources. You can access one printer from different computers and access data located on another computer's hard drive. Networks are even used for playing multiplayer video games. So, networks are not only useful in homes and offices, they can also be fun.

PCs on a wired network create a LAN, or Local Area Network. They are connected with Ethernet cables, which is why the network is called "wired".

PCs equipped with wireless cards and adapters can communicate without cumbersome cables. By sharing the same wireless settings, within their transmission radius, they form a wireless network. This is sometimes called a WLAN, or Wireless Local Area Network. The Wireless-G Broadband Router bridges wireless networks of both 802.11b and 802.11g standards and wired networks, allowing them to communicate with each other.

With your networks all connected, wired, wireless, and the Internet, you can now share files, Internet access, even play games. All the while, the Wireless-G Broadband Router protects your networks from unauthorized and unwelcome users.

Use the instructions in this Guide to help you connect the Wireless-G Broadband Router, set it up, and configure it to bridge your different networks. These instructions should be all you need to get the most out of the Wireless-G Broadband Router.

***LAN (Local Area Network):** The computers and networking products that make up the network in your home or office*

What's in this Guide?

This user guide covers the steps for setting up and using the Wireless-B Media Adapter.

- **Chapter 1: Introduction**
This chapter describes the Adapter's applications and this User Guide.
- **Chapter 2: Planning your Wireless Network**
This chapter describes the basics of wireless networking.
- **Chapter 3: Getting to Know the Wireless-G Broadband Router**
This chapter describes the physical features of the Router.
- **Chapter 4: Connecting the Wireless-G Broadband Router**
This chapter instructs you on how to connect the Router to your network.
- **Chapter 5: Configuring the Wireless-G Broadband Router**
This chapter explains how to use the Web-Based Utility to configure the settings on the Wireless-G Broadband Router.
- **Appendix A: Troubleshooting**
This appendix describes some problems and solutions, as well as frequently asked questions, regarding installation and use of the Wireless-G Broadband Router.
- **Appendix B: Wireless Security**
This appendix explains the risks of wireless networking and some solutions to reduce the risks.
- **Appendix C: Upgrading Firmware**
This appendix instructs you on how to upgrade the firmware on your Router if you should need to do so.
- **Appendix D: Windows Help**
This appendix describes how you can use Windows Help for instructions about networking, such as installing the TCP/IP protocol.
- **Appendix E: Finding the MAC Address and IP Address for your Ethernet Adapter.**
This appendix describes how to find the MAC address for your computer's Ethernet adapter so you can use the MAC filtering and/or MAC address cloning feature of the Router.
- **Appendix F: Glossary**
This appendix gives a brief glossary of terms frequently used in networking.

Wireless-G Broadband Router

- **Appendix G: Specifications**
This appendix provides the technical specifications for the Router.
- **Appendix H: Warranty Information**
This appendix supplies the warranty information for the Router.
- **Appendix I: Regulatory Information**
This appendix supplies the regulatory information regarding the Router.
- **Appendix J: Contact Information**
This appendix provides contact information for a variety of Linksys resources, including Technical Support.

Chapter 2: Planning your Wireless Network

Network Topology

A wireless LAN is a group of computers, each equipped with one Linksys wireless adapter. Computers in a wireless LAN must be configured to share the same radio channel.

The Linksys wireless adapters provide access to a wired LAN for wireless workstations. An integrated wireless and wired LAN is called an infrastructure configuration. A group of Linksys wireless adapter users and a Wireless-G Broadband Router compose a Basic Service Set (BSS). Each Linksys wireless adapter PC in a BSS can talk to any computer in a wired LAN infrastructure via the Wireless-G Broadband Router.

An infrastructure configuration extends the accessibility of a Linksys wireless adapter PC to a wired LAN, and doubles the effective wireless transmission range for two Linksys wireless adapter PCs. Since the Wireless-G Broadband Router is able to forward data within its BSS, the effective transmission range in an infrastructure LAN is doubled.

Roaming

Infrastructure mode also supports roaming capabilities for mobile users. More than one BSS can be configured as an Extended Service Set (ESS). This continuous network allows users to roam freely within an ESS. All PCs equipped with a Linksys wireless adapter within one ESS must be configured with the same ESS ID and use the same radio channel.

Before enabling an ESS with roaming capability, choosing a feasible radio channel and optimum Wireless-G Broadband Router position is recommended. Proper router positioning combined with a clear radio signal will greatly enhance performance.

LAN: the computers and networking products that make up your local network

Infrastructure: a wireless network that is bridged to a wired network via an access point.

Network Layout

The Wireless-G Broadband Router has been specifically designed for use with both your 802.11b and 802.11g products. Now, products using these standards can communicate with each other.

The Wireless-G Broadband Router is compatible with all 802.11b and 802.11g adapters, such as the PC Cards (WPC54G, WPC11) for your laptop computers, PCI Card (WMP54G) for your desktop PC, and USB Adapter (WUSB11) for when you want to enjoy USB connectivity. The Router will also communicate with the wireless PrintServer (WPS11) and bridges (WET11, WET54G).

When you wish to connect your wired network with your wireless network, the Wireless-G Broadband Router's LAN port can be connected to any of Linksys's switches (such as the EZXS55W or EZXS88W) or routers (such as the BEFSR41 or BEFVP41).

With these, and many other, Linksys products, your networking options are limitless. Go to the Linksys website at www.linksys.com for more information about products that work with the Wireless-G Broadband Router.

Chapter 3: Getting to Know the Wireless-G Broadband Router

The Back Panel

The Broadband Router's ports, where the cables are connected, are located on the back panel.



Figure 3-1: The Broadband Router's Back Panel



Important: Resetting the Broadband Router will erase all of your settings (WEP Encryption, Wireless and LAN settings, etc.) and replace them with the factory defaults. Do not reset the Broadband Router if you want to retain these settings.

Reset Button There are two ways to reset the Broadband Router's factory defaults. Either press the **Reset Button**, for approximately ten seconds, or restore the defaults from the Password tab in the Broadband Router's Web-Based Utility.

Internet The **Internet** port is where you will connect your broadband Internet connection.

1, 2, 3, 4 These ports (1, 2, 3, 4) connect the Broadband Router to your networked PCs and other Ethernet network devices.

Power The **Power** port is where you will connect the power adapter.

The Front Panel

The Router's LEDs, where information about network activity is displayed, are located on the front panel.

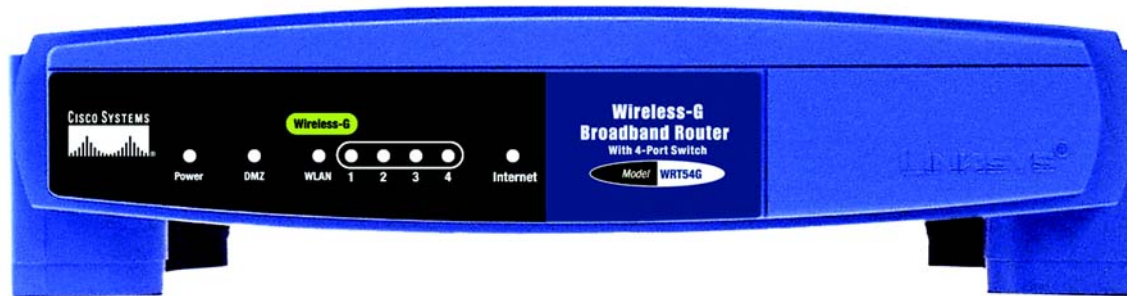


Figure 3-2: The Broadband Router's Front Panel

Power	Green. The Power LED lights up and will stay on while the Router is powered on. When the Router goes through its self-diagnosis mode during every boot-up, this LED will flicker, stopping upon successful completion of the diagnosis.
DMZ	Green. The DMZ LED indicates when the DMZ function is being utilized. This LED will remain on as long as DMZ is enabled.
WLAN	Green. The WLAN LED lights whenever there is a successful wireless connection. If the LED is flickering, the Broadband Router is actively sending or receiving data over the network.
1, 2, 3, 4	Green. These numbered LEDs, corresponding with the numbered ports on the Broadband Router's back panel, serve two purposes. If the LED is continuously lit, the Broadband Router is successfully connected to a device through that port. A flickering LED indicates network activity over that port.
Internet	Green. The Internet LED indicates when a successful connection is made through the Internet port.

Chapter 4: Connecting the Wireless-G Broadband Router

Hardware Installation

1. Locate an optimum location for the Broadband Router. The best place for the Broadband Router is usually at the center of your wireless network, with line of sight to all of your mobile stations.
2. Fix the direction of the antenna. Try to place it in a position that will best cover your wireless network. Normally, the higher you place the antenna, the better the performance will be. The antenna's position enhances the receiving sensitivity.
3. Connect a standard Ethernet network cable to the Broadband Router's Internet port. Then, connect the other end of the Ethernet cable to your Cable or DSL Broadband modem.

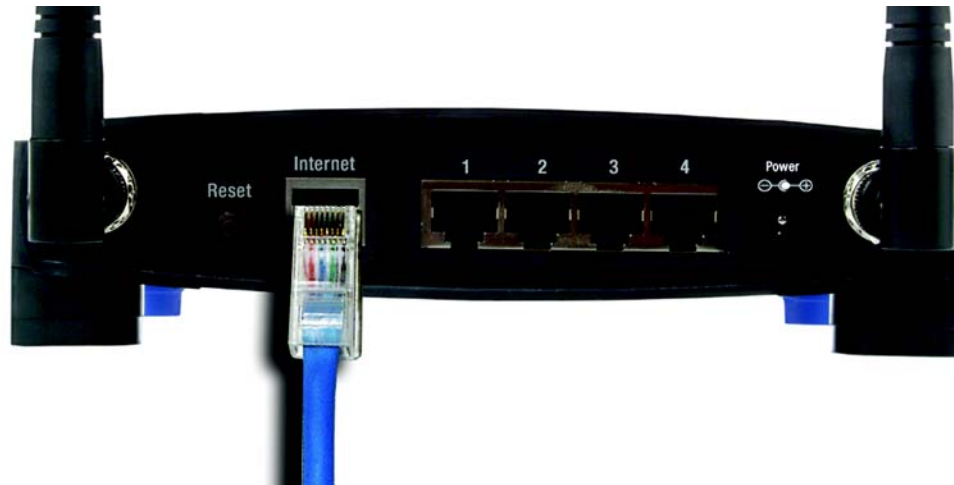


Figure 4-1: Connecting Your Internet Connection

4. Connect your network PCs or Ethernet devices to one of the Broadband Router's numbered ports with a standard Ethernet network cable.

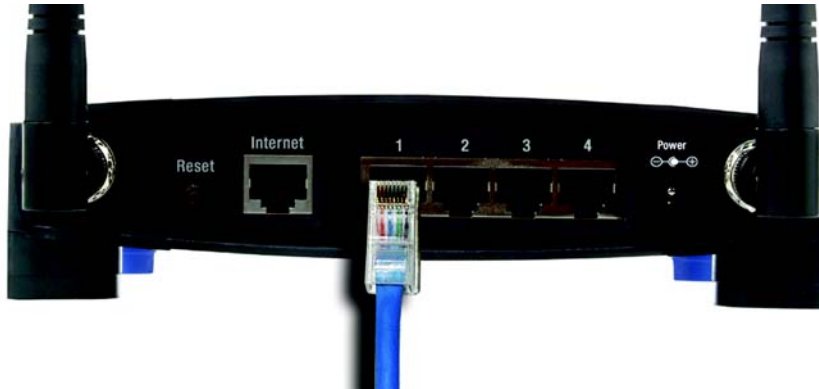


Figure 4-2: Connecting Your Network Devices

5. Connect the AC Power Adapter to the Broadband Router's Power Socket and the other end into an electrical outlet. Only use the power adapter supplied with the Broadband Router. Use of a different adapter may result in product damage.



IMPORTANT: Make sure to use the power adapter that is supplied with the Router. Use of a different power adapter could damage the Router.



Figure 4-3: Connecting the Power

Now that the hardware installation is complete, proceed to Chapter 5: Configuring the PCs, for directions on how to configure your PC.

Chapter 5: Configuring the PCs

Overview

The instructions in this chapter will help you configure each of your computers to be able to communicate with the Router.

To do this, you need to configure your PC's network settings to obtain an IP (or TCP/IP) address automatically, so your PC can function as a DHCP client. Computers use IP addresses to communicate with the Router and each other across a network, such as the Internet.

First, find out which Windows operating system your computer is running. You can find out by clicking the **Start** button. Read the side panel of the Start menu to find out which operating system your PC is running.

You may need to do this for each computer you are connecting to the Router.

The next few pages tell you, step by step, how to configure your network settings based on the type of Windows operating system you are using. Make sure that an Ethernet or wireless adapter (also known as a network adapter) has been successfully installed in each PC you will configure. Once you've configured your computers, continue to "Chapter 6: Using the Router's Web-Based Utility."

Configuring Windows 98 and Millennium PCs

1. Click the **Start** button. Select **Settings** and click the **Control Panel** icon. Double-click the **Network** icon.
2. On the Configuration tab, select the **TCP/IP** line for the applicable Ethernet adapter, as shown in Figure 5-1. Do not choose a TCP/IP entry whose name mentions DUN, PPPoE, VPN, or AOL. If the word TCP/IP appears by itself, select that line. Click the **Properties** button.
3. Click the **IP Address** tab. Select **Obtain an IP address automatically**. (See Figure 5-2.)



IMPORTANT: Important: By default Windows 98, 2000, Me, and XP has TCP/IP installed and set to obtain an IP address automatically. If your PC does not have TCP/IP installed, click Start and then Help. Search for the keyword TCP/IP. Then follow the instructions to install TCP/IP.

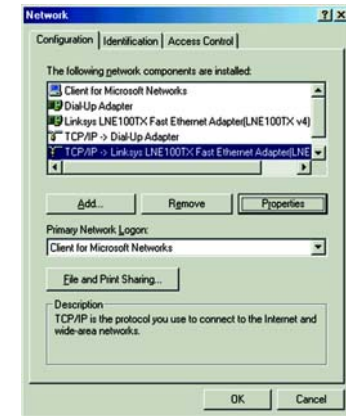


Figure 5-1: Configuration Tab



Figure 5-2: IP Address Tab

4. Now click the **Gateway** tab, and verify that the Installed Gateway field is blank. Click the **OK** button.
5. Click the **OK** button again. Windows may ask you for the original Windows installation disk or additional files. Check for the files at c:\windows\options\cab, or insert your Windows CD-ROM into your CD-ROM drive and check the correct file location, e.g., D:\win98, D:\win9x, etc. (if "D" is the letter of your CD-ROM drive).
6. Windows may ask you to restart your PC. Click the **Yes** button. If Windows does not ask you to restart, restart your computer anyway.

Go to "Chapter 6: Using the Router's Web-Based Utility."

Configuring Windows 2000 PCs

1. Click the **Start** button. Select Settings and click the **Control Panel** icon. Double-click the **Network and Dial-up Connections** icon.
2. Select the **Local Area Connection** icon for the applicable Ethernet adapter (usually it is the first Local Area Connection listed). Double-click the **Local Area Connection**. Click the **Properties** button. (See Figure 5-3.)
3. Make sure the box next to Internet Protocol (TCP/IP) is checked. Highlight Internet Protocol (TCP/IP), and click the **Properties** button. (See Figure 5-4.)
4. Select **Obtain an IP address automatically**. Once the new window appears, click the **OK** button. Click the **OK** button again to complete the PC configuration. (See Figure 5-5.)
5. Restart your computer.

Go to "Chapter 6: Using the Router's Web-Based Utility."



Figure 5-3: Properties

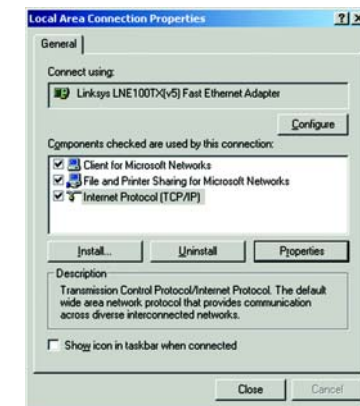


Figure 5-4: TCP/IP

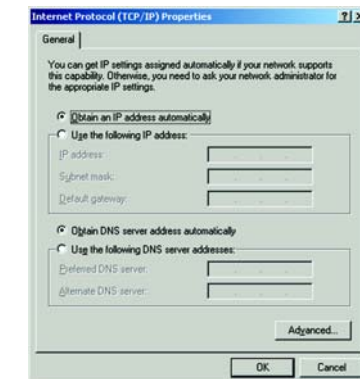


Figure 5-5: IP Address

Configuring Windows XP PCs

The following instructions assume you are running Windows XP with the default interface. If you are using the Classic interface (where the icons and menus look like previous Windows versions), please follow the instructions for Windows 2000.

1. Click the **Start** button and then the **Control Panel** icon. Click the **Network and Internet Connections** icon. Then click the **Network Connections** icon.
2. Select the **Local Area Connection** icon for the applicable Ethernet adapter (usually it is the first Local Area Connection listed). Double-click the **Local Area Connection**. Click the **Properties** button. (See Figure 5-6.)
3. Make sure the box next to Internet Protocol (TCP/IP) is checked. Highlight **Internet Protocol (TCP/IP)**, and click the **Properties** button. (See Figure 5-7.)
4. Select **Obtain an IP address automatically**. (See Figure 5-8.) Once the new window appears, click the **OK** button. Click the **OK** button again to complete the PC configuration.

Go to “Chapter 6: Using the Router’s Web-Based Utility.”

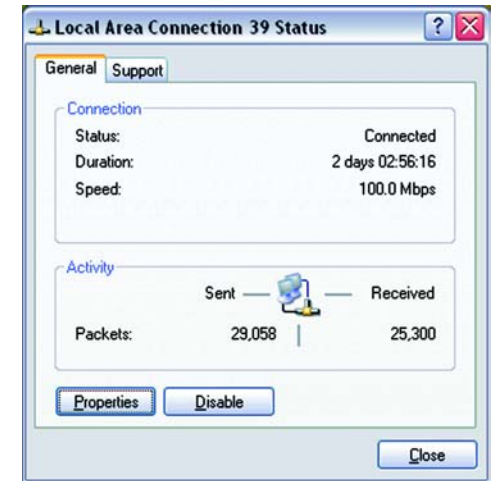


Figure 5-6: Properties

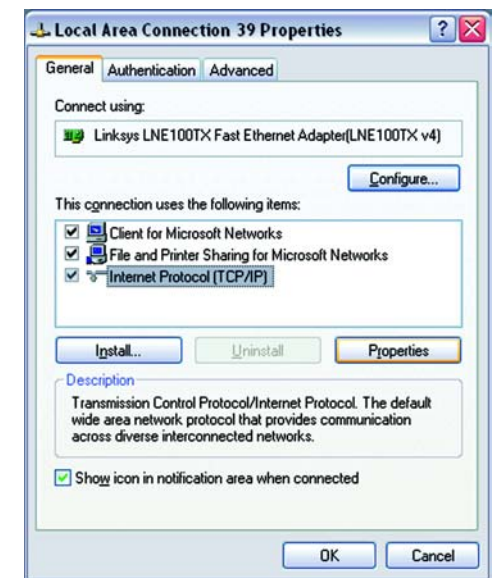


Figure 5-7: TCP/IP

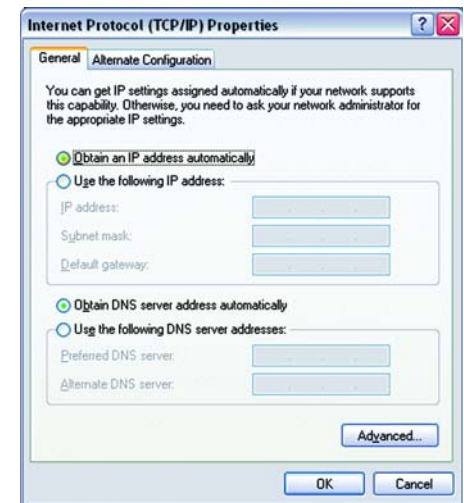


Figure 5-8: IP Address

Chapter 6: Configuring the Wireless-G Broadband Router

Overview

The Broadband Router has been designed to be functional right out of the box with the default settings in the Setup Wizard. However, if you'd like to change these settings, use the Router's web-based utility. This chapter will describe each web page in the Utility and each page's key functions. The utility can be accessed via your web browser through use of a computer connected to the Router. For a basic network setup, most users only have to use the following screens of the Utility:

- **Basic Setup.** On the Basic Setup screen, enter the settings provided by your ISP.
- **Management.** Click the **Administration** tab and then the **Management** tab. The Router's default password is **admin**. To secure the Router, change the Password from its default.

There are seven main tabs: Setup, Wireless, Security, Access Restrictions, Applications & Gaming, Administration, and Status. Additional tabs will be available after you click one of the main tabs.

To access the web-based utility, launch Internet Explorer or Netscape Navigator, and enter the Router's default IP address, 192.168.1.1, in the Address field. Then press **Enter**.

A password request page, shown in Figure 6-1 will appear. (non-Windows XP users will see a similar screen.) Leave the User Name field blank. The first time you open the Web-Based Utility, use the default password **admin**. (You can set a new password from the Administration tab's Management screen.) Then click the **OK** button.



Note: The Router is designed to function properly after connecting the Router to your network. This chapter is provided solely for those who wish to perform more advanced configuration or monitoring.



Have You: Enabled TCP/IP on your PCs? PCs communicate over the network with this protocol. Refer to Appendix D: Windows Help for more information on TCP/IP.



Figure 6-1: Password Screen

The Setup Tab - Basic Setup

The first screen that appears displays the Setup tab. This allows you to change the Broadband Router's general settings. Change these settings as described here and click the **Save Settings** button to apply your changes or **Cancel Changes** to cancel your changes.

Internet Setup

The Internet Setup section configures the Broadband Router to your Internet connection. Most of this information can be obtained through your ISP.

Internet Connection Type

Choose the type of Internet connection your ISP provides from the drop down menu.

- **DHCP.** By default, the Router's Internet Connection Type is set to **Automatic Configuration - DHCP**, which should be kept only if your ISP supports DHCP or you are connecting through a dynamic IP address.
- **Static IP.** If you are required to use a permanent IP address to connect to the Internet, select **Static IP**.

Internet IP Address. This is the Router's IP address, when seen from the Internet. Your ISP will provide you with the IP Address you need to specify here.

Subnet Mask. This is the Router's Subnet Mask, as seen by users on the Internet (including your ISP). Your ISP will provide you with the Subnet Mask.

Gateway. Your ISP will provide you with the Gateway Address, which is the ISP server's IP address.

DNS. Your ISP will provide you with at least one DNS (Domain Name System) Server IP Address.

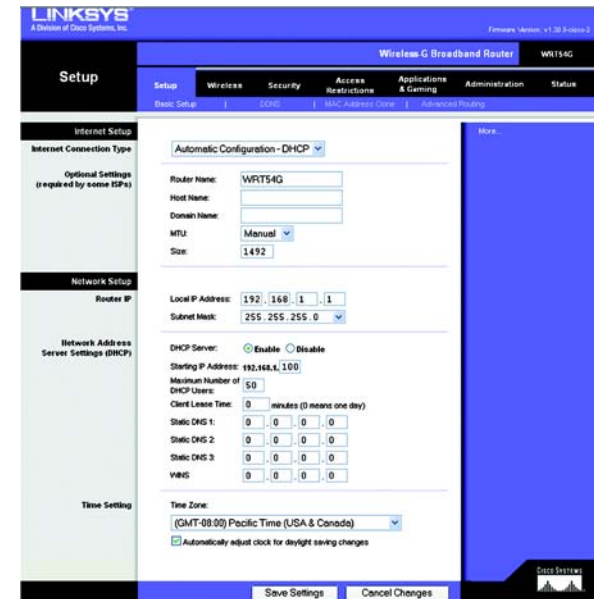


Figure 6-2: Setup Tab - Basic Setup



Figure 6-3: DHCP Connection Type

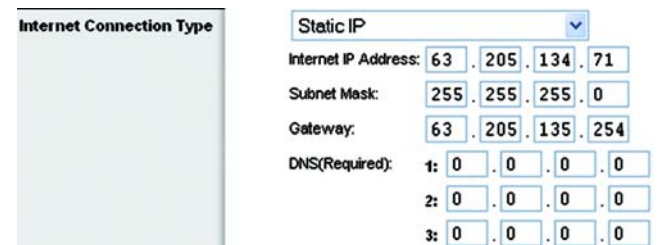


Figure 6-4: Static IP Connection Type

subnet mask: An address code that determines the size of the network.

- **PPPoE.** Some DSL-based ISPs use PPPoE (Point-to-Point Protocol over Ethernet) to establish Internet connections. If you are connected to the Internet through a DSL line, check with your ISP to see if they use PPPoE. If they do, you will have to enable **PPPoE**.

User Name and Password. Enter the User Name and Password provided by your ISP.

Connect on Demand: Max Idle Time. You can configure the Router to cut the Internet connection after it has been inactive for a specified period of time (Max Idle Time). If your Internet connection has been terminated due to inactivity, Connect on Demand enables the Router to automatically re-establish your connection as soon as you attempt to access the Internet again. If you wish to activate Connect on Demand, click the radio button. In the Max Idle Time field, enter the number of minutes you want to have elapsed before your Internet connection terminates.

Keep Alive Option: Redial Period. If you select this option, the Router will periodically check your Internet connection. If you are disconnected, then the Router will automatically re-establish your connection. To use this option, click the radio button next to Keep Alive. In the Redial Period field, you specify how often you want the Router to check the Internet connection. The default Redial Period is 30 seconds.

- **PPTP.** Point to Point Tunneling Protocol (PPTP), is a service that applies to connections in Europe only.

Specify Internet IP Address This is the Router's IP address, as seen from the Internet. Your ISP will provide you with the IP Address you need to specify here.

Subnet Mask This is the Router's Subnet Mask, as seen by users on the Internet (including your ISP). Your ISP will provide you with the Subnet Mask.

Gateway. Your ISP will provide you with the Gateway Address.

User Name and Password. Enter the User Name and Password provided by your ISP.

Connect on Demand: Max Idle Time. You can configure the Router to cut the Internet connection after it has been inactive for a specified period of time (Max Idle Time). If your Internet connection has been terminated due to inactivity, Connect on Demand enables the Router to automatically re-establish your connection as soon as you attempt to access the Internet again. If you wish to activate Connect on Demand, click the radio button. In the Max Idle Time field, enter the number of minutes you want to have elapsed before your Internet connection terminates.

Keep Alive Option: Redial Period. If you select this option, the Router will periodically check your Internet connection. If you are disconnected, then the Router will automatically re-establish your connection. To use this option, click the radio button next to Keep Alive. To use this option, click the radio button next to Keep Alive. In the Redial Period field, you specify how often you want the Router to check the Internet connection. The default Redial Period is 30 seconds.



Figure 6-5: PPPoE Connection Type

static ip address: a fixed address assigned to a computer or device connected to a network

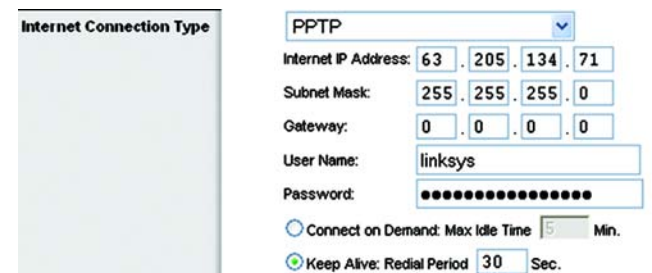


Figure 6-6: PPTP Connection Type

Optional Settings

Some of these settings may be required by your ISP. Verify with your ISP before making any changes.

Router Name. In this field, you can type a name of up to 39 characters to represent the Router.

Host Name/Domain Name. These fields allow you to supply a host and domain name for the Router. Some ISPs, usually cable ISPs, require these names as identification. You may have to check with your ISP to see if your broadband Internet service has been configured with a host and domain name. In most cases, leaving these fields blank will work.

MTU. MTU is the Maximum Transmission Unit. It specifies the largest packet size permitted for Internet transmission. The default setting, **Manual**, allows you to enter the largest packet size that will be transmitted. The recommended size, entered in the **Size** field, is 1492. You should leave this value in the 1200 to 1500 range. To have the Router select the best MTU for your Internet connection, select **Auto**.

Network Setup

The Network Setup section changes the settings on the network connected to the Router's Ethernet ports. Wireless Setup is performed through the Wireless tab.

Router IP

This presents both the Router's IP Address and Subnet Mask as seen by your network.

Network Address Server Settings (DHCP)

The settings allow you to configure the Router's Dynamic Host Configuration Protocol (DHCP) server function. The Router can be used as a DHCP server for your network. A DHCP server automatically assigns an IP address to each computer on your network. If you choose to enable the Router's DHCP server option, you must configure all of your network PCs to connect to a DHCP server (the Router), and make sure there is no other DHCP server on your network.

DHCP Server. DHCP is enabled by factory default. If you already have a DHCP server on your network, or you don't want a DHCP server, then click the Disable radio button (no other DHCP features will be available).

Starting IP Address. Enter a value for the DHCP server to start with when issuing IP addresses. Because the Router's default IP address is 192.168.1.1, the Starting IP Address must be 192.168.1.2 or greater, but smaller than 192.168.1.253. The default Starting IP Address is 192.168.1.100.

Optional Settings (required by some ISPs)

Router Name: WRT54G

Host Name:

Domain Name:

MTU: Manual

Size: 1492

Figure 6-7: Optional Settings



IMPORTANT: Restoring the Router's factory default settings will erase all of your settings (WEP Encryption, Wireless and LAN settings, etc.), and replace them with the factory defaults. Do not reset the Router if you want to retain these settings.

Router IP

Local IP Address: 192 . 168 . 1 . 1

Subnet Mask: 255 . 255 . 255 . 0

Figure 6-8: Router IP

Network Address Server Settings (DHCP)

DHCP Server: Enable Disable

Starting IP Address: 192.168.1.100

Maximum Number of DHCP Users: 50

Client Lease Time: 0 minutes (0 means one day)

Static DNS 1: 0 . 0 . 0 . 0

Static DNS 2: 0 . 0 . 0 . 0

Static DNS 3: 0 . 0 . 0 . 0

WINS: 0 . 0 . 0 . 0

Figure 6-9: Network Address Server Settings

Maximum Number of DHCP Users. Enter the maximum number of PCs that you want the DHCP server to assign IP addresses to. This number cannot be greater than 253. The default is 50.

Client Lease Time. The Client Lease Time is the amount of time a network user will be allowed connection to the Router with their current dynamic IP address. Enter the amount of time, in minutes, that the user will be “leased” this dynamic IP address. After the time is up, the user will be automatically assigned a new dynamic IP address. The default is 0 minutes, which means one day.

Static DNS (1-3). The Domain Name System (DNS) is how the Internet translates domain or website names into Internet addresses or URLs. Your ISP will provide you with at least one DNS Server IP Address. If you wish to use another, type that IP Address in one of these fields. You can type up to three DNS Server IP Addresses here. The Router will use these for quicker access to functioning DNS servers.

WINS. The Windows Internet Naming Service (WINS) manages each PC’s interaction with the Internet. If you use a WINS server, enter that server’s IP Address here. Otherwise, leave this blank.

Time Setting

Change the time zone in which your network functions from this pull down menu. (You can even automatically adjust for daylight savings time.)

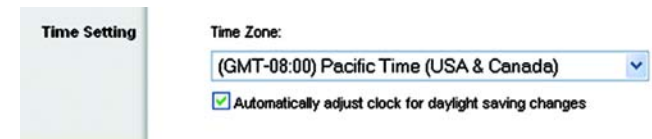


Figure 6-10: Time Setting

The Setup Tab - DDNS

The Router offers a Dynamic Domain Name System (DDNS) feature. DDNS lets you assign a fixed host and domain name to a dynamic Internet IP address. It is useful when you are hosting your own website, FTP server, or other server behind the Router. Before you can use this feature, you need to sign up for DDNS service at www.dyndns.org, or www.TZO.com, DDNS service providers.

DDNS Service. From this pull-down menu, enter the DDNS service with which you have membership.

User Name. Enter the User Name for your DDNS account

Password. Enter the Password for your DDNS account.

Host Name. This is the DDNS URL assigned by the DDNS service.

Internet IP Address. This is the Router's current IP Address as seen on the Internet.

Status. This displays the status of the DDNS connection.

Change these settings as described here and click the **Save Settings** button to apply your changes or **Cancel Changes** to cancel your changes.



Figure 6-11: Setup Tab - DDNS



Note: Availability of DDNS service may vary depending on region.

The Setup Tab - MAC Address Clone

A MAC address is a 12-digit code assigned to a unique piece of hardware for identification. Some ISPs will require you to register a MAC address in order to access the Internet. If you do not wish to re-register the MAC address with your ISP, you may assign the MAC address you have currently registered with your ISP to the Router with the MAC Address Clone feature.

Enable/Disable. To have the MAC Address cloned, click the radio button beside **Enable**.

User Defined Entry. Enter the MAC Address registered with your ISP here.

Clone Your PC's MAC Address. Clicking this button will clone the MAC address.

Change these settings as described here and click the **Save Settings** button to apply your changes or **Cancel Changes** to cancel your changes.



Figure 6-12: Setup Tab - MAC Address Clone

The Setup Tab - Advanced Routing

This tab is used to set up the Router's advanced functions. Operating Mode allows you to select the type(s) of advanced functions you use. Dynamic Routing will automatically adjust how packets travel on your network. Static Routing sets up a fixed route to another network destination.

Operating Mode. Select the mode in which this Router will function. If this Router is hosting your network's connection to the Internet, select **Gateway**. If another Router exists on your network, select **Router**. When Router is chosen, **Dynamic Routing** will be enabled.

Dynamic Routing. The Dynamic Routing feature enables the Router to automatically adjust to physical changes in the network's layout and exchange routing tables with the other router(s). The Router determines the network packets' route based on the fewest number of hops between the source and the destination. This feature is Disabled by default. From the drop-down menu, you can also select, **LAN & Wireless**, which performs dynamic routing over both your Ethernet and wireless networks. You can also select, **WAN**, which performs dynamic routing with data coming from the Internet. Finally, selecting **Both** performs dynamic routing with both methods described.

Static Routing. To set up a static route between the Router and another network, select a number from the Static Routing drop-down list. (A static route is a pre-determined pathway that network information must travel to reach a specific host or network.) Enter the information described below to set up a new static route. (Clicking the **Delete This Entry** will delete a static route.)

Enter Route Name. Enter a name for the Route here, using a maximum of 25 alphanumeric characters.

Destination LAN IP. The Destination LAN IP is the address of the remote network or host to which you want to assign a static route.

Subnet Mask. The Subnet Mask determines which portion of a Destination LAN IP address is the network portion, and which portion is the host portion.

Default Gateway. This is the IP address of the gateway device that allows for contact between the Router and the remote network or host.

Interface. This interface tells you whether the Destination IP Address is on the **LAN & Wireless** (Ethernet and wireless networks), the **WAN** (Internet), or **Loopback** (a dummy network in which one PC acts like a network-necessary for certain software programs).

Click the **Show Routing Table** button to view the Static Routes you've already set up.

Change these settings as described here and click the **Save Settings** button to apply your changes or **Cancel Changes** to cancel your changes.

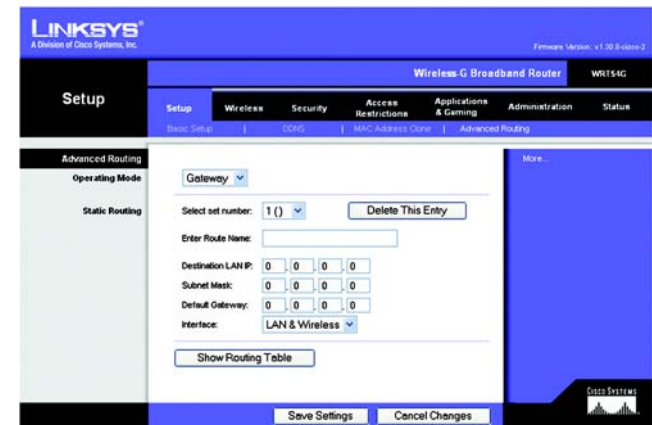


Figure 6-13: Setup Tab - Advanced Routing (Gateway)

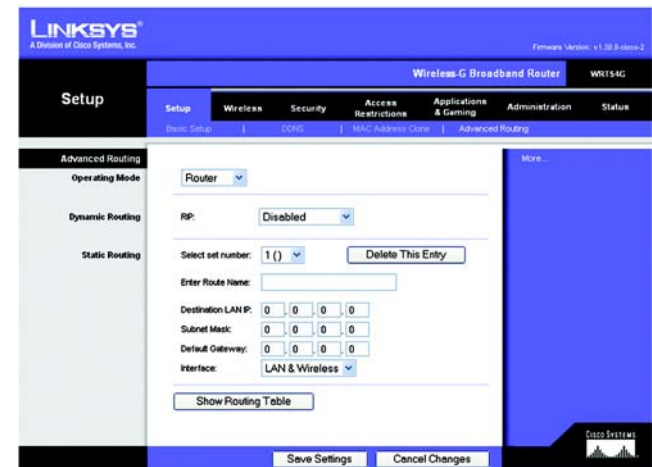


Figure 6-14: Setup Tab - Advanced Routing (Router)

The Wireless Tab - Basic Wireless Settings

The basic settings for wireless networking are set on this screen.

Wireless Network Mode. From this drop-down menu, you can select the wireless standards running on your network. If you have both Wireless-G and 802.11b devices in your network, keep the default setting, **Mixed**. If you have only Wireless-G devices, select **G-Only**. If you have only Wireless-B devices, select **B-Only**. If you do not have any Wireless-G and 802.11b devices in your network, select **Disable**.

Wireless Network Name (SSID). The SSID is the network name shared among all points in a wireless network. The SSID must be identical for all points in the wireless network. It is case-sensitive and must not exceed 32 characters (use any of the characters on the keyboard). Make sure this setting is the same for all points in your wireless network. For added security, you should change the default SSID (linksys) to a unique name.

Wireless Channel. Select the appropriate channel from the list provided to correspond with your network settings. All devices in your wireless network must be broadcast on the same channel in order to function correctly.

Wireless SSID Broadcast. When wireless clients survey the local area for wireless networks to associate with, they will detect the SSID broadcast by the Router. To broadcast the Router's SSID, keep the default setting, **Enable**. If you do not want to broadcast the Router's SSID, then select **Disable**.

Change these settings as described here and click the **Save Settings** button to apply your changes or **Cancel Changes** to cancel your changes.



Figure 6-15: Wireless Tab - Basic Wireless Settings

The Wireless Tab - Wireless MAC Filter

Wireless access can be filtered by using the MAC addresses of the wireless devices transmitting within your network's radius.

Wireless MAC Filter. To filter wireless users by MAC Address, either permitting or preventing access, click the radio button beside **Enable**. If you do not wish to filter users by MAC Address, select **Disable**.

Prevent. Clicking this button will Prevent users access by MAC Address.

Permit Only. Clicking this button will Permit users access by MAC Address.

Edit MAC Address Filter List. Clicking this button will open the MAC Address Filter List. On this screen, you can list users, by MAC Address, to whom you wish to provide or block access. The **Wireless Client/MAC List** button will display network users by MAC Address for easy reference.

Change these settings as described here and click the **Save Settings** button to apply your changes or **Cancel Changes** to cancel your changes.



Figure 6-16: Wireless Tab - Wireless MAC Filter

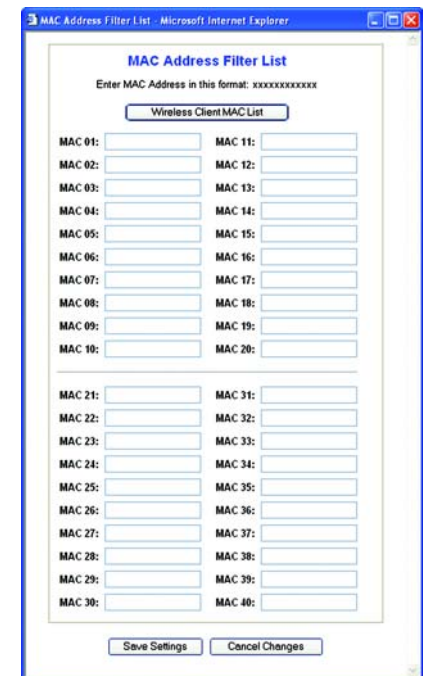


Figure 6-17: MAC Address Filter List

The Wireless Tab - Advanced Wireless Settings

This tab is used to set up the Router's advanced wireless functions. These settings should only be adjusted by an expert administrator as incorrect settings can reduce wireless performance.

Authentication Type. The default is set to **Auto**, which allows either Open System or Shared Key authentication to be used. With **Open System** authentication, the sender and the recipient do NOT use a WEP key for authentication. With **Shared Key** authentication, the sender and recipient use a WEP key for authentication.

Basic Rate. The Basic Rate setting is not actually one rate of transmission but a series of rates, advertising to the other wireless points in your network at what rates the Router can transmit. At the default setting, the Router will advertise that it will **Automatically select the best rate** for transmission. Other options of rates to advertise are **1-2Mbps**, for use with older wireless technology, and **All**, when you wish to make all rates advertised. The Basic Rate is not the rate transmitted; that is the Transmission Rate.

Transmission Rate. The rate of data transmission should be set depending on the speed of your wireless network. You can select from a range of transmission speeds, or you can select **Auto** to have the Router automatically use the fastest possible data rate and enable the Auto-Fallback feature. Auto-Fallback will negotiate the best possible connection speed between the Router and a wireless client. The default value is **Auto**.

CTS Protection Mode. This should remain disabled unless having severe problems with your Wireless-G products not being able to transmit to the Router. This function boosts the Router's ability to catch all 802.11b and Wireless-G transmissions but will severely decrease performance.

Frame Burst. Enabling this option should provide your network with greater performance, varying upon the manufacturer of your wireless products.

Beacon Interval. The default value is **100**. Enter a value between 1 and 65,535 milliseconds. The Beacon Interval value indicates the frequency interval of the beacon. A beacon is a packet broadcast by the Router to synchronize the wireless network.

DTIM Interval. This value, between 1 and 16384, indicates the interval of the Delivery Traffic Indication Message (DTIM). A DTIM field is a countdown field informing clients of the next window for listening to broadcast and multicast messages. When the Router has buffered broadcast or multicast messages for associated clients, it sends the next DTIM with a DTIM Interval value. Its clients hear the beacons and awaken to receive the broadcast and multicast messages. The default value is **1**.



Figure 6-18: Wireless Tab - Advanced Wireless Settings

Fragmentation Threshold. This value specifies the maximum size for a packet before data is fragmented into multiple packets. If you experience a high packet error rate, you may slightly increase the Fragmentation Threshold. Setting the Fragmentation Threshold too low may result in poor network performance. Only minor reduction of the default value is recommended. In most cases, it should remain at its default value of **2346**.

RTS Threshold. Should you encounter inconsistent data flow, only minor reduction of the default value, **2346**, is recommended. If a network packet is smaller than the preset RTS threshold size, the RTS/CTS mechanism will not be enabled. The Router sends Request to Send (RTS) frames to a particular receiving station and negotiates the sending of a data frame. After receiving an RTS, the wireless station responds with a Clear to Send (CTS) frame to acknowledge the right to begin transmission. The RTS Threshold value should remain at its default value of 2346.

Change these settings as described here and click the **Save Settings** button to apply your changes or **Cancel Changes** to cancel your changes.

The Security Tab - Firewall

Block WAN Requests. Enable the Block WAN Request feature by checking the box beside **Block Anonymous Internet Requests** and you can prevent your network from being “pinged,” or detected, by other Internet users. The Block WAN Request feature also reinforces your network security by hiding your network ports. Both functions of the Block WAN Request feature make it more difficult for outside users to work their way into your network. This feature is enabled by default.

Change these settings as described here and click the **Save Settings** button to apply your changes or **Cancel Changes** to cancel your changes.



Figure 6-19: Security Tab - Firewall

The Security Tab - VPN Passthrough

Use the settings on this tab to allow VPN tunnels in either IPSec or PPTP protocols to pass through the Router's firewall.

IPSec Pass-through. Internet Protocol Security (IPSec) is a suite of protocols used to implement secure exchange of packets at the IP layer. To allow IPSec tunnels to pass through the Router, click the radio button beside **Enable**. IPSec Pass-Through is enabled by default.

PPTP Pass-through. Point-to-Point Tunneling Protocol is the method used to enable VPN sessions to a Windows NT 4.0 or 2000 server. To allow PPTP tunnels to pass through the Router, click the radio button beside **Enable**. PPTP Pass-Through is enabled by default.



Figure 6-20: Wireless Tab - Basic Wireless Settings

Change these settings as described here and click the **Save Settings** button to apply your changes or **Cancel Changes** to cancel your changes.

The Security Tab - Wireless Security

The Wireless Security settings configure the security of your wireless network. There are four wireless security mode options supported by the Router, WPA, RADIUS, and WEP. These four are briefly discussed here. For detailed instructions on configuring wireless security for the Router, turn to Appendix B: Wireless Security.

WPA Pre-Shared Key. WPA gives you two encryption methods, TKIP and AES, with dynamic encryption keys. Select the type of algorithm, TKIP or AES, enter a Pre-Shared key of 8-32 characters, and enter a Group Key Renewal period, which instructs the Router how often it should change the encryption keys.



Figure 6-21: Wireless Tab - Wireless Security (WPA Pre-Shared Key)

WPA Radius. WPA used in coordination with a RADIUS server. (This should only be used when a RADIUS server is connected to the Router.) First, select the type of WPA algorithm, TKIP or AES. Enter the RADIUS server's IP Address and port number, along with a key shared between the Router and the server. Last, enter a Group Key Renewal period, which instructs the Router how often it should change the encryption keys.



Figure 6-22: Wireless Tab - Wireless Security (WPA Radius)

Radius. WEP used in coordination with a RADIUS server. (This should only be used when a RADIUS server is connected to the Router.) First, enter the RADIUS server's IP Address and port number, along with a key shared between the Router and the server. Then, select a WEP key and a level of WEP encryption, and either generate a WEP key through the Passphrase or enter the WEP key manually.

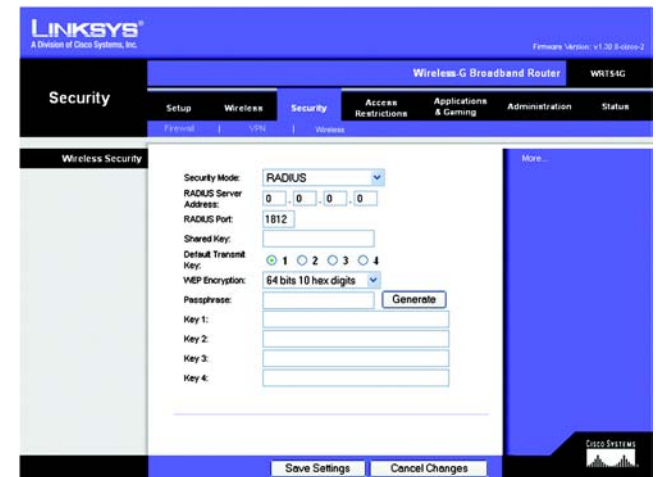


Figure 6-23: Wireless Tab - Wireless Security (Radius)

WEP. WEP is a basic encryption method, not as secure as WPA. To use WEP, select a WEP key and a level of WEP encryption, and either generate a WEP key through the Passphrase or enter the WEP key manually.

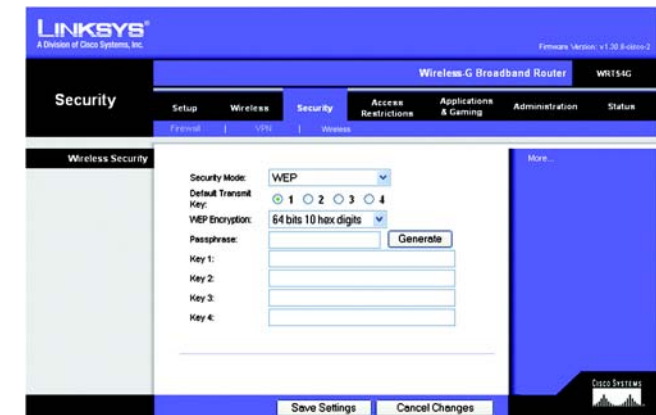


Figure 6-24: Wireless Tab - Wireless Security (WEP)

Change these settings as described here and click the **Save Settings** button to apply your changes or **Cancel Changes** to cancel your changes. For detailed instructions on configuring wireless security for the Router, turn to Appendix B: Wireless Security.

The Access Restrictions Tab

The Access Restrictions tab allows you to block or allow network access as well as manage specific kinds of Internet usage.

Internet Access Policy. Access is managed by a policy. An access policy is established with the settings on this screen (after **Save Settings** is clicked). Selecting a policy from the drop-down menu will display that policy's settings on this screen. To delete a policy, select that policy's number and click the **Delete** button. To view the policies established, click the **View Summary** button. (Policies can be deleted from the summary screen by selecting the policy or policies and clicking the **Delete** button.)

Status. Policies are automatically enabled. To disable a policy, which will cease it from functioning until you enable it once again, click the radio button beside **Disable**.

Enter Policy Name. Each policy can be named, using no more than 30 characters, so you can remember what it's for.

PCs. Click the Edit List of PCs button to select which PCs will be affected by the policy. You can enter the PC by MAC Address or IP Address. You can also enter a range of IP Addresses if you wish this policy to affect a group of PCs. After making your changes, click the **Save Settings** button to apply your changes or **Cancel Changes** to cancel your changes.

Days/Times. When will this policy be in effect? On every day? At certain times? Select the individual days or select **Everyday**. Select **24 Hours** or enter a range of hours in which the policy will be in effect.

Filtered Port Range. To filter a range of ports, based on certain criteria, enter the ranges here.

TCP. Enter the range of the ports you wish to filter that use the TCP protocol.

UDP. Enter the range of the ports you wish to filter that use the TCP protocol.

Both. Enter the range of the ports you wish to filter that use both the TCP and UDP protocols.

Disable. Two ranges are supplied for ports you wish to disable.

Change these settings as described here and click the **Save Settings** button to apply your changes or **Cancel Changes** to cancel your changes.

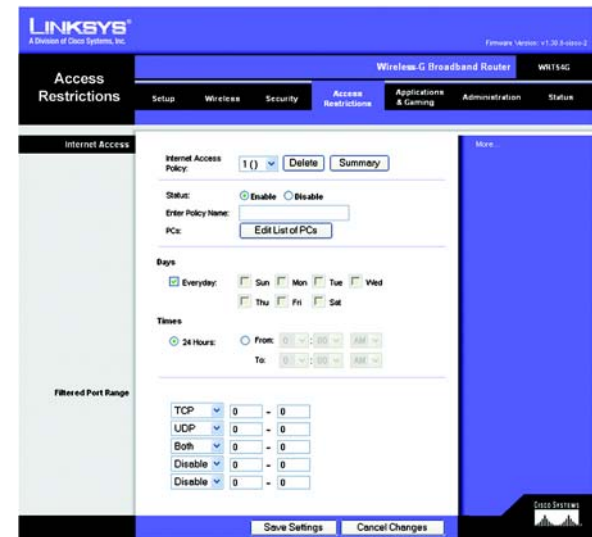


Figure 6-25: Access Restrictions Tab



Figure 6-26: Internet Policy Summary



Figure 6-27: List of PCs

The Applications and Gaming Tab - Port Range Forward

The Applications and Gaming Tab allows you to set up public services on your network, such as web servers, ftp servers, e-mail servers, or other specialized Internet applications. (Specialized Internet applications are any applications that use Internet access to perform functions such as videoconferencing or online gaming. Some Internet applications may not require any forwarding.)

To forward a port, enter the information on each line for the criteria required. Descriptions of each criteria are described here.

Application. In this field, enter the name you wish to give the application. Each name can be up to 12 characters.

Start/End. This is the port range. Enter the number that starts the port range under **Start** and the number that ends the range under **End**.

Protocol. Enter the protocol used for this application, either TCP or UDP, or **Both**.

IP Address. For each application, enter the IP Address of the PC running the specific application.

Enable. Click the **Enable** checkbox to enable port forwarding for the relevant application.

Change these settings as described here and click the **Save Settings** button to apply your changes or **Cancel Changes** to cancel your changes.

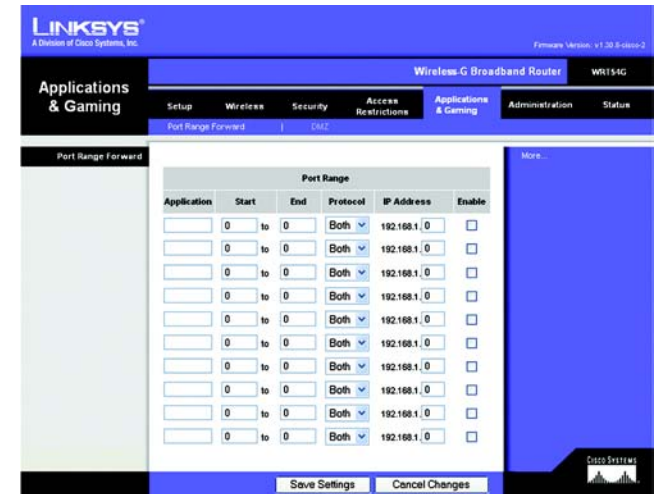


Figure 6-28: Applications and Gaming Tab - Port Range Forward

The Applications and Gaming Tab - DMZ

The DMZ feature allows one network user to be exposed to the Internet for use of a special-purpose service such as Internet gaming or videoconferencing. DMZ hosting forwards all the ports at the same time to one PC. The Port Range Forward feature is more secure because it only opens the ports you want to have opened, while DMZ hosting opens all the ports of one computer, exposing the computer to the Internet.

Any PC whose port is being forwarded must have its DHCP client function disabled and should have a new static IP address assigned to it because its IP address may change when using the DHCP function.

To expose one PC, select **Enable**. Then, enter the computer's IP address in the DMZ Host IP Address field.

Change these settings as described here and click the **Save Settings** button to apply your changes or **Cancel Changes** to cancel your changes.



Figure 6-29: Applications and Gaming - DMZ

The Administration Tab - Management

This section of the Administration tab allows the network's administrator to manage specific Router functions for access and security.

Local Router Access. You can change the Router's password from here. Enter a new Router password and then type it again in the **Re-enter to confirm** field to confirm.

Remote Router Access. To access the Router remotely, from outside the network, verify that **Enable** is selected. Then, enter the port number that will be open to outside access. You will need to enter the Router's password when accessing the Router this way, as usual.

UPnP. When using UPnP features, select **Enable**. As allowing this may present a risk to security, this feature is disabled by default.

Change these settings as described here and click the **Save Settings** button to apply your changes or **Cancel Changes** to cancel your changes.

The Administration Tab - Log

The Router can keep logs of all traffic for your Internet connection. To disable the Log function, keep the default setting, **Disable**. To monitor traffic between the network and the Internet, select **Enable**. When you wish to view the logs, click **Incoming Log** or **Outgoing Log**, depending on which you wish to view.

Change these settings as described here and click the **Save Settings** button to apply your changes or **Cancel Changes** to cancel your changes.



Figure 6-30: Administration Tab - Management



Figure 6-31: Administration Tab - Log

The Administration Tab - Diagnostics

The diagnostic tests (Ping and TraceRoute) allow you to check the connections of your network components.

Ping Test. The Ping test will check the status of a connection. Click the **Ping** button to open the Ping Test screen. Enter the address of the PC whose connection you wish to test and how many times you wish to test it. Then, click the **Ping** button. A successful test will look similar to that shown in Figure 5-33. To stop the test, click the **Stop** button. Click the **Clear Log** button to clear the screen. Click the **Close** button to return to the Diagnostics screen.

Traceroute Test. To test the performance of a connect, click the **Traceroute** button. Enter the address of the PC whose connection you wish to test and click the **Ping** button. A successful test will look similar to that shown in Figure 5-34. To stop the test, click the **Stop** button. Click the **Clear Log** button to clear the screen. Click the **Close** button to return to the Diagnostics screen.

Change these settings as described here and click the **Save Settings** button to apply your changes or **Cancel Changes** to cancel your changes.

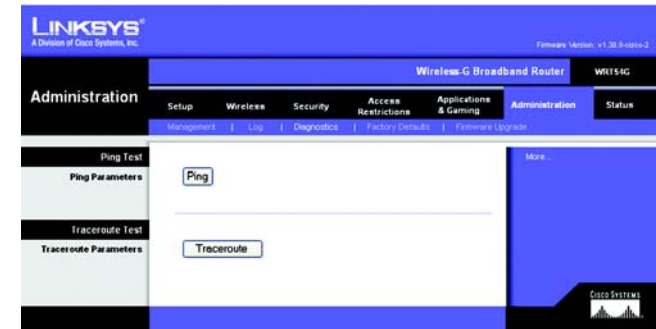


Figure 6-32: Administration Tab - Diagnostics



Figure 6-33: The Ping Test

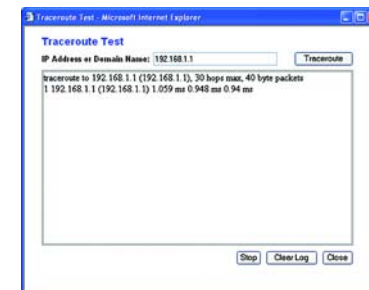


Figure 6-34: The Traceroute Test

The Administration Tab - Factory Defaults

Click the **Yes** button to reset all configuration settings to their default values, and then click the **Save Settings** button. Any settings you have saved will be lost when the default settings are restored. This feature is disabled by default.

The Administration Tab - Firmware Upgrade

Firmware can be upgraded by clicking the **Upgrade** button after browsing for the firmware, which you can download from the Linksys website. Do not upgrade your firmware unless you are experiencing problems with the Router. For more information about upgrading firmware, refer to “Appendix C: Upgrading Firmware”.



Figure 6-35: Administration Tab - Factory Defaults



Figure 6-36: Administration Tab - Firmware Upgrade

The Status Tab - Router

The Router screen on the Status Tab displays the Router's current status.

Firmware Version. This is the Router's current firmware.

Current Time. This shows the time, as you set on the Setup Tab.

MAC Address. This is the Router's MAC Address, as seen by your ISP.

Router Name. This is the specific name for the Router, which you set on the Setup Tab.

Host Name. If required by your ISP, this would have been entered on the Setup Tab.

Domain Name. If required by your ISP, this would have been entered on the Setup Tab.

Configuration Type. This shows the information required by your ISP for connection to the Internet. This information was entered on the Setup Tab. You can **Connect** or **Disconnect** your connection here by clicking on that button.



Figure 6-37: Status Tab - Router

The Status Tab - Local Network

The Local Network screen on the Status Tab displays the status of your network.

MAC Address. This is the Router's MAC Address, as seen on your local, Ethernet network.

IP Address. This shows the Router's IP Address, as it appears on your local, Ethernet network.

Subnet Mask. When the Router is using a Subnet Mask, it is shown here.

DHCP Server. If you are using the Router as a DHCP server, that will be displayed here.

Start IP Address. For the range of IP Addresses used by points on your local, Ethernet network, the beginning of that range is shown here.

End IP Address. For the range of IP Addresses used by points on your local, Ethernet network, the end of that range is shown here.

DHCP Clients Table. Clicking this button will open a screen to show you which PCs are utilizing the Router as a DHCP server. You can delete PCs from that list, and sever their connections, by checking a **Delete** box and clicking the **Delete** button.



Figure 6-38: Status Tab - Local Network

The Status Tab - Wireless

The Wireless screen on the Status Tab displays the status of your wireless network.

MAC Address. This is the Router's MAC Address, as seen on your local, wireless network.

Mode. As selected from the Wireless tab, this will display the wireless mode (Mixed, G-Only, or Disabled) used by the network.

SSID. As entered on the Wireless tab, this will display the wireless network name or SSID.

DHCP Server. If you are using the Router as a DHCP server, that will be displayed here.

Channel. As entered on the Wireless tab, this will display the channel on which your wireless network is broadcasting.

Encryption Function. As selected on the Security Tab, this will display what type of encryption the Router uses for security.



Figure 6-39: Status Tab - Wireless

Appendix A: Troubleshooting

This appendix consists of two parts: “Common Problems and Solutions” and “Frequently Asked Questions.” Provided are possible solutions to problems that may occur during the installation and operation of the Router. Read the descriptions below to help you solve your problems. If you can’t find an answer here, check the Linksys website at www.linksys.com.

Common Problems and Solutions

1. *I need to set a static IP address on a PC.*

You can assign a static IP address to a PC by performing the following steps:

- For Windows 98 and Me:
 1. Click **Start**, **Settings**, and **Control Panel**. Double-click **Network**.
 2. In The following network components are installed box, select the TCP/IP-> associated with your Ethernet adapter. If you only have one Ethernet adapter installed, you will only see one TCP/IP line with no association to an Ethernet adapter. Highlight it and click the Properties button.
 3. In the TCP/IP properties window, select the IP address tab, and select Specify an IP address. Enter a unique IP address that is not used by any other computer on the network connected to the Router. Make sure that each IP address is unique for each PC or network device.
 4. Click the **Gateway** tab, and in the New Gateway prompt, enter 192.168.1.1, which is the default IP address of the Router. Click the Add button to accept the entry.
 5. Click the **DNS** tab, and make sure the DNS Enabled option is selected. Enter the Host and Domain names (e.g., John for Host and home for Domain). Enter the DNS entry provided by your ISP. If your ISP has not provided the DNS IP address, contact your ISP to get that information or go to its website for the information.
 6. Click the **OK** button in the TCP/IP properties window, and click Close or the OK button for the Network window.
 7. Restart the computer when asked.
- For Windows 2000:
 1. Click **Start**, **Settings**, and **Control Panel**. Double-click **Network and Dial-Up Connections**.
 2. Right-click the Local Area Connection that is associated with the Ethernet adapter you are using, and select the Properties option.
 3. In the Components checked are used by this connection box, highlight Internet Protocol (TCP/IP), and click the **Properties** button. Select **Use the following IP address** option.
 4. Enter a unique IP address that is not used by any other computer on the network connected to the Router.
 5. Enter the Subnet Mask, 255.255.255.0.
 6. Enter the Default Gateway, 192.168.1.1 (Router’s default IP address).

7. Toward the bottom of the window, select Use the following DNS server addresses, and enter the Preferred DNS server and Alternative DNS server (provided by your ISP). Contact your ISP or go on its website to find the information.
 8. Click the **OK** button in the Internet Protocol (TCP/IP) Properties window, and click the **OK** button in the Local Area Connection Properties window.
 9. Restart the computer if asked.
- For Windows XP:
The following instructions assume you are running Windows XP with the default interface. If you are using the Classic interface (where the icons and menus look like previous Windows versions), please follow the instructions for Windows 2000.
 1. Click **Start** and **Control Panel**.
 2. Click the **Network and Internet Connections** icon and then the **Network Connections** icon.
 3. Right-click the **Local Area Connection** that is associated with the Ethernet adapter you are using, and select the Properties option.
 4. In the **This connection uses the following items** box, highlight **Internet Protocol (TCP/IP)**. Click the **Properties** button.
 5. Enter a unique IP address that is not used by any other computer on the network connected to the Router.
 6. Enter the Subnet Mask, 255.255.255.0.
 7. Enter the Default Gateway, 192.168.1.1 (Router's default IP address).
 8. Toward the bottom of the window, select Use the following DNS server addresses, and enter the Preferred DNS server and Alternative DNS server (provided by your ISP). Contact your ISP or go on its website to find the information.
 9. Click the **OK** button in the Internet Protocol (TCP/IP) Properties window. Click the **OK** button in the Local Area Connection Properties window.

2. I want to test my Internet connection.

A Check your TCP/IP settings.

For Windows 98, Me, 2000, and XP:

- Refer to "Chapter 4: Configure the PCs" for details. Make sure Obtain IP address automatically is selected in the settings.

B Open a command prompt.

For Windows 98 and Me:

- Click **Start** and **Run**. In the Open field, type in command. Press the **Enter** key or click the **OK** button.

For Windows 2000 and XP:

- Click **Start** and **Run**. In the Open field, type cmd. Press the **Enter** key or click the **OK** button. In the command prompt, type ping 192.168.1.1 and press the Enter key.
- If you get a reply, the computer is communicating with the Router.
- If you do NOT get a reply, please check the cable, and make sure Obtain an IP address automatically is selected in the TCP/IP settings for your Ethernet adapter.

C In the command prompt, type ping followed by your Internet or WAN IP address and press the **Enter** key. The Internet or WAN IP Address can be found on the Status screen of the Router's web-based utility. For example, if your Internet or WAN IP address is 1.2.3.4, you would enter ping 1.2.3.4 and press the Enter key.

- If you get a reply, the computer is connected to the Router.
 - If you do NOT get a reply, try the ping command from a different computer to verify that your original computer is not the cause of the problem.
- D In the command prompt, type ping www.yahoo.com and press the **Enter** key.
- If you get a reply, the computer is connected to the Internet. If you cannot open a webpage, try the ping command from a different computer to verify that your original computer is not the cause of the problem.
 - If you do NOT get a reply, there may be a problem with the connection. Try the ping command from a different computer to verify that your original computer is not the cause of the problem.

5. I am not getting an IP address on the Internet with my Internet connection.

- Refer to "Problem #2, I want to test my Internet connection" to verify that you have connectivity.
 1. If you need to register the MAC address of your Ethernet adapter with your ISP, please see "Appendix D: Finding the MAC address and IP Address for Your Ethernet Adapter." If you need to clone the MAC address of your Ethernet adapter onto the Router, see the System section of "Chapter 6: The Router's Web-based Utility" for details.
 2. Make sure you are using the right Internet connection settings. Contact your ISP to see if your Internet connection type is DHCP, Static IP Address, or PPPoE (commonly used by DSL consumers). Please refer to the Setup section of "Chapter 6: The Router's Web-based Utility" for details on Internet connection settings.
 3. Make sure you have the right cable. Check to see if the Internet column has a solidly lit Link/Act LED.
 4. Make sure the cable connecting from your cable or DSL modem is connected to the Router's Internet port. Verify that the Status page of the Router's web-based utility shows a valid IP address from your ISP.
 5. Turn off the computer, Router, and cable/DSL modem. Wait 30 seconds, and then turn on the Router, cable/DSL modem, and computer. Check the Status tab of the Router's web-based utility to see if you get an IP address.

6. I am not able to access the Setup page of the Router's web-based utility.

- Refer to "Problem #2, I want to test my Internet connection" to verify that your computer is properly connected to the Router.
 1. Refer to "Appendix D: Finding the MAC Address and IP address for Your Ethernet Adapter" to verify that your computer has an IP Address, Subnet Mask, Gateway, and DNS.
 2. Set a static IP address on your system; refer to "Problem #1: I need to set a static IP address."
 3. Refer to "Problem #10: I need to remove the proxy settings or the dial-up pop-up window (for PPPoE users)."

7. I need to set up a server behind my Router and make it available to the public.

To use a server like a web, ftp, or mail server, you need to know the respective port numbers they are using. For example, port 80 (HTTP) is used for web; port 21 (FTP) is used for FTP, and port 25 (SMTP outgoing) and port 110 (POP3 incoming) are used for the mail server. You can get more information by viewing the documentation provided with the server you installed.

- Follow these steps to set up port forwarding through the Router's web-based utility. We will be setting up web, ftp, and mail servers.
 1. Access the Router's web-based utility by going to <http://192.168.1.1> or the IP address of the Router. Go to the Applications & Gaming => Port Forwarding tab.
 2. Enter any name you want to use for the Customized Application.
 3. Enter the External Port range of the service you are using. For example, if you have a web server, you would enter the range 80 to 80.
 4. Check the protocol you will be using, TCP and/or UDP.
 5. Enter the IP address of the PC or network device that you want the port server to go to. For example, if the web server's Ethernet adapter IP address is 192.168.1.100, you would enter 100 in the field provided. Check "Appendix D: Finding the MAC Address and IP Address for Your Ethernet Adapter" for details on getting an IP address.
 6. Check the Enable option for the port services you want to use. Consider the example below:

Customized Application	External Port	TCP	UDP	IP Address	Enable
Web server	80 to 80	X	X	192.168.1.100	X
FTP server	21 to 21	X		192.168.1.101	X
SMTP (outgoing)	25 to 25	X	X	192.168.1.102	X
POP3 (incoming)	110 to 110	X	X	192.168.1.102	X

When you have completed the configuration, click the **Save Settings** button.

8. I need to set up online game hosting or use other Internet applications.

If you want to play online games or use Internet applications, most will work without doing any port forwarding or DMZ hosting. There may be cases when you want to host an online game or Internet application. This would require you to set up the Router to deliver incoming packets or data to a specific computer. This also applies to the Internet applications you are using. The best way to get the information on what port services to use is to go to the website of the online game or application you want to use. Follow these steps to set up online game hosting or use a certain Internet application:

1. Access the Router's web interface by going to <http://192.168.1.1> or the IP address of the Router. Go to the Applications & Gaming => Port Forwarding tab.
2. Enter any name you want to use for the Customized Application.
3. Enter the External Port range of the service you are using. For example, if you want to host Unreal Tournament (UT), you would enter the range 7777 to 27900.

4. Check the protocol you will be using, TCP and/or UDP.
5. Enter the IP address of the PC or network device that you want the port server to go to. For example, if the web server's Ethernet adapter IP address is 192.168.1.100, you would enter 100 in the field provided. Check "Appendix D: Finding the MAC Address and IP Address for Your Ethernet Adapter" for details on getting an IP address.
6. Check the **Enable** option for the port services you want to use. Consider the example below:

Customized Application	External Port	TCP	UDP	IP Address	Enable
UT	7777 to 27900	X	X	192.168.1.100	X
HalfLife	27015 to 27015	X	X	192.168.1.105	X
PC Anywhere	5631 to 5631		X	192.168.1.102	X
VPN IPSEC	500 to 500		X	192.168.1.100	X

When you have completed the configuration, click the **Save Settings** button.

9. I can't get the Internet game, server, or application to work.

If you are having difficulties getting any Internet game, server, or application to function properly, consider exposing one PC to the Internet using DeMilitarized Zone (DMZ) hosting. This option is available when an application requires too many ports or when you are not sure which port services to use. Make sure you disable all the forwarding entries if you want to successfully use DMZ hosting, since forwarding has priority over DMZ hosting. (In other words, data that enters the Router will be checked first by the forwarding settings. If the port number that the data enters from does not have port forwarding, then the Router will send the data to whichever PC or network device you set for DMZ hosting.)

- Follow these steps to set DMZ hosting:
 1. Access the Router's web-based utility by going to <http://192.168.1.1> or the IP address of the Router. Go to the Applications & Gaming => Port Forwarding tab.
 2. Disable or remove the entries you have entered for forwarding. Keep this information in case you want to use it at a later time.
 3. Go to the Applications & Gaming => DMZ tab.
 4. Select Enable next to DMZ. In the DMZ Host IP Address field, enter the IP address of the computer you want exposed to the Internet. This will bypass the NAT technology for that computer. Please refer to "Appendix D: Finding the MAC Address and IP Address for Your Ethernet Adapter" for details on getting an IP address.
- Once completed with the configuration, click the **Apply** button.

10. I forgot my password, or the password prompt always appears when I am saving settings to the Router.

- Reset the Router to factory default by pressing the Reset button for 10 seconds and then releasing it. If you are still getting prompted for a password when saving settings, then perform the following steps:

1. Access the Router's web-based utility by going to <http://192.168.1.1> or the IP address of the Router. Enter the default password admin, and click the Administrations => Management tab.
2. Enter a different password in the Router Password field, and enter the same password in the second field to confirm the password.
3. Click the **Save Settings** button.

11. I am a PPPoE user, and I need to remove the proxy settings or the dial-up pop-up window.

If you have proxy settings, you need to disable these on your computer. Because the Router is the gateway for the Internet connection, the computer does not need any proxy settings to gain access. Please follow these directions to verify that you do not have any proxy settings and that the browser you use is set to connect directly to the LAN.

- For Microsoft Internet Explorer 5.0 or higher:
 1. Click **Start, Settings, and Control Panel**. Double-click Internet Options.
 2. Click the **Connections** tab.
 3. Click the **LAN settings** button and remove anything that is checked.
 4. Click the **OK** button to go back to the previous screen.
 5. Click the option **Never dial a connection**. This will remove any dial-up pop-ups for PPPoE users.
- For Netscape 4.7 or higher:
 1. Start **Netscape Navigator**, and click **Edit, Preferences, Advanced, and Proxies**.
 2. Make sure you have Direct connection to the Internet selected on this screen.
 3. Close all the windows to finish.

12. To start over, I need to set the Router to factory default.

Hold the **Reset** button for 10 seconds and then release it. This will return the password, forwarding, and other settings on the Router to the factory default settings. In other words, the Router will revert to its original factory configuration.

13. I need to upgrade the firmware.

In order to upgrade the firmware with the latest features, you need to go to the Linksys website and download the latest firmware at www.linksys.com.

- Follow these steps:
 1. Go to the Linksys website at <http://www.linksys.com> and download the latest firmware.
 2. To upgrade the firmware, follow the steps in "Appendix C: Upgrading Firmware."

14. The firmware upgrade failed, and/or the Power LED is flashing.

The upgrade could have failed for a number of reasons. Follow these steps to upgrade the firmware and/or make the Power LED stop flashing:

- If the firmware upgrade failed, use the TFTP program (it was downloaded along with the firmware). Open the pdf that was downloaded along with the firmware and TFTP program, and follow the pdf's instructions.

- Set a static IP address on the PC; refer to “Problem #1, I need to set a static IP address.” Use the following IP address settings for the computer you are using:
IP Address: 192.168.1.50
Subnet Mask: 255.255.255.0
Gateway: 192.168.1.1
- Perform the upgrade using the TFTP program or the Router’s web-based utility through its System tab.

15. My DSL service’s PPPoE is always disconnecting.

PPPoE is not actually a dedicated or always-on connection. The DSL ISP can disconnect the service after a period of inactivity, just like a normal phone dial-up connection to the Internet.

- There is a setup option to “keep alive” the connection. This may not always work, so you may need to re-establish connection periodically.
 1. To connect to the Router, go to the web browser, and enter `http://192.168.1.1` or the IP address of the Router.
 2. Enter the password, if asked. (The default password is admin.)
 3. On the Setup screen, select the option **Keep Alive**, and set the Redial Period option at 20 (seconds).
 4. Click the **Save Settings** button.
 5. Click the **Status** tab, and click the **Connect** button.
 6. You may see the login status display as Connecting. Press the F5 key to refresh the screen, until you see the login status display as Connected.
- Click the **Save Settings** button to continue.
- If the connection is lost again, follow steps 1- 6 to re-establish connection.

16. I can’t access my e-mail, web or I am getting corrupted data from the Internet.

The Maximum Transmission Unit (MTU) setting may need to be adjusted. By default, the MTU is set at 1500. For most DSL users, it is strongly recommended to use MTU 1492.

- If you are having some difficulties, perform the following steps:
 1. To connect to the Router, go to the web browser, and enter `http://192.168.1.1` or the IP address of the Router.
 2. Enter the password, if asked. (The default password is admin.)
 3. Look for the MTU option, and select **Manual**. In the Size field, enter 1492.
 4. Click the **Save Settings** button to continue.
- If your difficulties continue, change the Size to different values. Try this list of values, one value at a time, in this order, until your problem is solved:
1462
1400
1362
1300

17. The Power LED keeps flashing.

The Power LED flashes when the device is first powered up. Meantime, the system will boot up itself and check for proper operation. After finishing the checking procedure, the LED stays solid to show that the system is working fine. If the LED keeps flashing after this time, the device is not working properly. Try to flash the firmware by assigning a static IP address to the computer, and then upgrade the firmware. Try using the following settings, IP Address: 192.168.1.50 and Subnet Mask: 255.255.255.0.

18. When I enter a URL or IP address, I get a time-out error or am prompted to retry.

- Check if other PCs work. If they do, ensure that your workstation's IP settings are correct (IP Address, Subnet Mask, Default Gateway, and DNS). Restart the computer that is having a problem.
- If the PCs are configured correctly, but still not working, check the Router. Ensure that it is connected and powered on. Connect to it and check its settings. (If you cannot connect to it, check the LAN and power connections.)
- If the Router is configured correctly, check your Internet connection (DSL/cable modem, etc.) to see if it is working correctly. You can remove the Router to verify a direct connection.
- Manually configure the TCP/IP settings with a DNS address provided by your ISP.
- Make sure that your browser is set to connect directly and that any dial-up is disabled. For Internet Explorer, click **Tools, Internet Options**, and then the **Connection** tab. Make sure that Internet Explorer is set to **Never dial a connection**. For Netscape Navigator, click **Edit, Preferences, Advanced**, and **Proxy**. Make sure that Netscape Navigator is set to **Direct connection to the Internet**.

Frequently Asked Questions

What is the maximum number of IP addresses that the Router will support?

The Router will support up to 253 IP addresses.

Is IPSec Pass-Through supported by the Router?

Yes, it is a built-in feature that the Router automatically enables.

Where is the Router installed on the network?

In a typical environment, the Router is installed between the cable/DSL modem and the LAN. Plug the Router into the cable/DSL modem's Ethernet port.

Does the Router support IPX or AppleTalk?

No. TCP/IP is the only protocol standard for the Internet and has become the global standard for communications. IPX, a NetWare communications protocol used only to route messages from one node to another, and AppleTalk, a communications protocol used on Apple and Macintosh networks, can be used for LAN to LAN connections, but those protocols cannot connect from the Internet to a LAN.

Does the Internet connection of the Router support 100Mbps Ethernet?

The Router's current hardware design supports up to 100Mbps Ethernet on its Internet port; however, the Internet connection speed will vary depending on the speed of your broadband connection. The Router also supports 100Mbps over the auto-sensing Fast Ethernet 10/100 switch on the LAN side of the Router.

What is Network Address Translation and what is it used for?

Network Address Translation (NAT) translates multiple IP addresses on the private LAN to one public address that is sent out to the Internet. This adds a level of security since the address of a PC connected to the private LAN is never transmitted on the Internet. Furthermore, NAT allows the Router to be used with low cost Internet accounts, such as DSL or cable modems, when only one TCP/IP address is provided by the ISP. The user may have many private addresses behind this single address provided by the ISP.

Does the Router support any operating system other than Windows 98, Windows Millennium, Windows 2000, or Windows XP?

Yes, but Linksys does not, at this time, provide technical support for setup, configuration or troubleshooting of any non-Windows operating systems.

Does the Router support ICQ send file?

Yes, with the following fix: click ICQ menu -> preference -> connections tab->, and check I am behind a firewall or proxy. Then set the firewall time-out to 80 seconds in the firewall setting. The Internet user can then send a file to a user behind the Router.

I set up an Unreal Tournament Server, but others on the LAN cannot join. What do I need to do?

If you have a dedicated Unreal Tournament server running, you need to create a static IP for each of the LAN computers and forward ports 7777, 7778, 7779, 7780, 7781, and 27900 to the IP address of the server. You can also use a port forwarding range of 7777 ~ 27900. If you want to use the UT Server Admin, forward another port. (Port 8080 usually works well but is used for remote admin. You may have to disable this.) Then in the [UWeb.WebServer] section of the server.ini file, set the ListenPort to 8080 (to match the mapped port above) and ServerName to the IP assigned to the Router from your ISP.

Can multiple gamers on the LAN get on one game server and play simultaneously with just one public IP address?

It depends on which network game or what kind of game server you are using. For example, Unreal Tournament supports multi-login with one public IP.

How do I get Half-Life: Team Fortress to work with the Router?

The default client port for Half-Life is 27005. The computers on your LAN need to have "+clientport 2700x" added to the HL shortcut command line; the x would be 6, 7, 8, and on up. This lets multiple computers connect to the same server. One problem: Version 1.0.1.6 won't let multiple computers with the same CD key connect at

the same time, even if on the same LAN (not a problem with 1.0.1.3). As far as hosting games, the HL server does not need to be in the DMZ. Just forward port 27015 to the local IP address of the server computer.

How can I block corrupted FTP downloads?

If you are experiencing corrupted files when you download a file with your FTP client, try using another FTP program.

The web page hangs; downloads are corrupt, or nothing but junk characters are being displayed on the screen. What do I need to do?

Force your Ethernet adapter to 10Mbps or half duplex mode, and turn off the "Auto-negotiate" feature of your Ethernet adapter as a temporary measure. (Please look at the Network Control Panel in your Ethernet adapter's Advanced Properties tab.) Make sure that your proxy setting is disabled in the browser. Check our website at www.linksys.com for more information.

If all else fails in the installation, what can I do?

Reset the Router by holding down the reset button until the Power LED fully turns on and off. Reset your cable or DSL modem by powering the unit off and then on. Obtain and flash the latest firmware release that is readily available on the Linksys website, www.linksys.com.

How will I be notified of new Router firmware upgrades?

All Linksys firmware upgrades are posted on the Linksys website at www.linksys.com, where they can be downloaded for free. To upgrade the Router's firmware, use the System tab of the Router's web-based utility. If the Router's Internet connection is working well, there is no need to download a newer firmware version, unless that version contains new features that you would like to use. Downloading a more current version of Router firmware will not enhance the quality or speed of your Internet connection, and may disrupt your current connection stability.

Will the Router function in a Macintosh environment?

Yes, but the Router's setup pages are accessible only through Internet Explorer 4.0 or Netscape Navigator 4.0 or higher for Macintosh.

I am not able to get the web configuration screen for the Router. What can I do?

You may have to remove the proxy settings on your Internet browser, e.g., Netscape Navigator or Internet Explorer. Or remove the dial-up settings on your browser. Check with your browser documentation, and make sure that your browser is set to connect directly and that any dial-up is disabled. Make sure that your browser is set to connect directly and that any dial-up is disabled. For Internet Explorer, click Tools, Internet Options, and then the Connection tab. Make sure that Internet Explorer is set to Never dial a connection. For Netscape Navigator, click Edit, Preferences, Advanced, and Proxy. Make sure that Netscape Navigator is set to Direct connection to the Internet.

What is DMZ Hosting?

Demilitarized Zone (DMZ) allows one IP address (computer) to be exposed to the Internet. Some applications require multiple TCP/IP ports to be open. It is recommended that you set your computer with a static IP if you want to use DMZ Hosting. To get the LAN IP address, see "Appendix E: Finding the MAC Address and IP Address for Your Ethernet Adapter."

If DMZ Hosting is used, does the exposed user share the public IP with the Router?

No.

Does the Router pass PPTP packets or actively route PPTP sessions?

The Router allows PPTP packets to pass through.

Is the Router cross-platform compatible?

Any platform that supports Ethernet and TCP/IP is compatible with the Router.

How many ports can be simultaneously forwarded?

Theoretically, the Router can establish 520 sessions at the same time, but you can only forward 10 ranges of ports.

What are the advanced features of the Router?

The Router's advanced features include Advanced Wireless settings, Filters, Port Forwarding, Routing, and DDNS.

How do I get mIRC to work with the Router?

Under the Port Forwarding tab, set port forwarding to 113 for the PC on which you are using mIRC.

Can the Router act as my DHCP server?

Yes. The Router has DHCP server software built-in.

Can I run an application from a remote computer over the wireless network?

This will depend on whether or not the application is designed to be used over a network. Consult the application's documentation to determine if it supports operation over a network.

What is the IEEE 802.11g standard?

It is one of the IEEE standards for wireless networks. The 802.11g standard allows wireless networking hardware from different manufacturers to communicate, provided that the hardware complies with the 802.11g standard. The 802.11g standard states a maximum data transfer rate of 54Mbps and an operating frequency of 2.4GHz.

What IEEE 802.11b features are supported?

The product supports the following IEEE 802.11b functions:

- CSMA/CA plus Acknowledge protocol

Wireless-G Broadband Router

- Multi-Channel Roaming
- Automatic Rate Selection
- RTS/CTS feature
- Fragmentation
- Power Management

What is ad-hoc mode?

When a wireless network is set to ad-hoc mode, the wireless-equipped computers are configured to communicate directly with each other. The ad-hoc wireless network will not communicate with any wired network.

What is infrastructure mode?

When a wireless network is set to infrastructure mode, the wireless network is configured to communicate with a wired network through a wireless access point.

What is roaming?

Roaming is the ability of a portable computer user to communicate continuously while moving freely throughout an area greater than that covered by a single access point. Before using the roaming function, the workstation must make sure that it is the same channel number with the access point of dedicated coverage area.

To achieve true seamless connectivity, the wireless LAN must incorporate a number of different functions. Each node and access point, for example, must always acknowledge receipt of each message. Each node must maintain contact with the wireless network even when not actually transmitting data. Achieving these functions simultaneously requires a dynamic RF networking technology that links access points and nodes. In such a system, the user's end node undertakes a search for the best possible access to the system. First, it evaluates such factors as signal strength and quality, as well as the message load currently being carried by each access point and the distance of each access point to the wired backbone. Based on that information, the node next selects the right access point and registers its address. Communications between end node and host computer can then be transmitted up and down the backbone.

As the user moves on, the end node's RF transmitter regularly checks the system to determine whether it is in touch with the original access point or whether it should seek a new one. When a node no longer receives acknowledgment from its original access point, it undertakes a new search. Upon finding a new access point, it then re-registers, and the communication process continues.

What is ISM band?

The FCC and their counterparts outside of the U.S. have set aside bandwidth for unlicensed use in the ISM (Industrial, Scientific and Medical) band. Spectrum in the vicinity of 2.4 GHz, in particular, is being made available worldwide. This presents a truly revolutionary opportunity to place convenient high-speed wireless capabilities in the hands of users around the globe.

What is Spread Spectrum?

Spread Spectrum technology is a wideband radio frequency technique developed by the military for use in reliable, secure, mission-critical communications systems. It is designed to trade off bandwidth efficiency for reliability, integrity, and security. In other words, more bandwidth is consumed than in the case of narrowband transmission, but the trade-off produces a signal that is, in effect, louder and thus easier to detect, provided that the receiver knows the parameters of the spread-spectrum signal being broadcast. If a receiver is not tuned to the right frequency, a spread-spectrum signal looks like background noise. There are two main alternatives, Direct Sequence Spread Spectrum (DSSS) and Frequency Hopping Spread Spectrum (FHSS).

What is DSSS? What is FHSS? And what are their differences?

Frequency-Hopping Spread-Spectrum (FHSS) uses a narrowband carrier that changes frequency in a pattern that is known to both transmitter and receiver. Properly synchronized, the net effect is to maintain a single logical channel. To an unintended receiver, FHSS appears to be short-duration impulse noise. Direct-Sequence Spread-Spectrum (DSSS) generates a redundant bit pattern for each bit to be transmitted. This bit pattern is called a chip (or chipping code). The longer the chip, the greater the probability that the original data can be recovered. Even if one or more bits in the chip are damaged during transmission, statistical techniques embedded in the radio can recover the original data without the need for retransmission. To an unintended receiver, DSSS appears as low power wideband noise and is rejected (ignored) by most narrowband receivers.

Will the information be intercepted while it is being transmitted through the air?

WLAN features two-fold protection in security. On the hardware side, as with Direct Sequence Spread Spectrum technology, it has the inherent security feature of scrambling. On the software side, WLAN offers the encryption function (WEP) to enhance security and access control.

What is WEP?

WEP is Wired Equivalent Privacy, a data privacy mechanism based on a 64-bit or 128-bit shared key algorithm, as described in the IEEE 802.11 standard.

What is a MAC Address?

The Media Access Control (MAC) address is a unique number assigned by the manufacturer to any Ethernet networking device, such as a network adapter, that allows the network to identify it at the hardware level. For all practical purposes, this number is usually permanent. Unlike IP addresses, which can change every time a computer logs onto the network, the MAC address of a device stays the same, making it a valuable identifier for the network.

How do I reset the Router?

Press the Reset button on the back panel for about ten seconds. This will reset the Router to its default settings.

How do I resolve issues with signal loss?

There is no way to know the exact range of your wireless network without testing. Every obstacle placed between the Router and a wireless PC will create signal loss. Lead glass, metal, concrete floors, water and walls will inhibit the signal and reduce range. Start with the Router and your wireless PC in the same room and move it away in small increments to determine the maximum range in your environment.

You may also try using different channels, as this may eliminate interference affecting only one channel.

I have excellent signal strength, but I cannot see my network.

WEP is probably enabled on the Router, but not on your wireless adapter (or vice versa). Verify that the same WEP keys and levels (64 or 128) are being used on all nodes of your wireless network.

How many channels/frequencies are available with the Router?

There are eleven available channels, ranging from 1 to 11 (in North America).

If your questions are not addressed here, refer to the Linksys website, www.linksys.com.

Appendix B: Wireless Security

A Brief Overview

Whenever data—in the form of files, emails, or messages—is transmitted over your wireless network, it is open to attacks. Wireless networking is inherently risky because it broadcasts information on radio waves. Just like signals from your cellular or cordless phone can be intercepted, signals from your wireless network can also be compromised. What are the risks inherent in wireless networking? Read on.

What Are The Risks?

Computer network hacking is nothing new. With the advent of wireless networking, hackers use methods both old and new to do everything from stealing your bandwidth to stealing your data. There are many ways this is done, some simple, some complex. As a wireless user, you should be aware of the many ways they do this.

Every time a wireless transmission is broadcast, signals are sent out from your wireless PC or access point, but not always directly to its destination. The receiving PC or access point can hear the signal because it is within that radius. Just as with a cordless phone, cellular phone, or any kind of radio device, anyone else within that radius, who has their device set to the same channel or bandwidth can also receive those transmission.

Wireless networks are easy to find. Hackers know that, in order to join a wireless network, your wireless PC will typically first listen for “beacon messages”. These are identifying packets transmitted from the wireless network to announce its presence to wireless nodes looking to connect. These beacon frames are decrypted and contain much of the network’s information, such as the network’s SSID (Service Set Identifier) and the IP address of the network PC or access point. The SSID is analogous to the network’s name. With this information broadcast to anyone within range, hackers are often provided with just the information they need to access that network.

One result of this, seen in many large cities and business districts, is called “Warchalking”. This is the term used for hackers looking to access free bandwidth and free Internet access through your wireless network. The marks they chalk into the city streets are well documented in the Internet and communicate exactly where available wireless bandwidth is located for the taking.

Even keeping your network settings, such as the SSID and the channel, secret won't prevent a hacker from listening for those beacon messages and stealing that information. This is why most experts in wireless networking strongly recommend the use of WEP (Wired Equivalent Privacy). WEP encryption scrambles your wireless signals so they can only be recognized within your wireless network.

let's warchalk..!	
KEY	SYMBOL
OPEN NODE	ssid X bandwidth
CLOSED NODE	ssid O
WEP NODE	ssid access contact W bandwidth
blackbeltjones.com/warchalking	

Figure B-1: Warchalking

But even WEP has its problems. WEP's encryption algorithm is referred to as "simple", which also means "weak", because the technology that scrambles the wireless signal isn't too hard to crack for a persistent hacker.

There are five common ways that hackers can break into your network and steal your bandwidth as well as your data. The five attacks are popularly known as:

1. Passive Attacks
2. Jamming Attacks
3. Active Attacks
4. Dictionary-building or Table Attacks
5. Man-in-the-Middle Attacks

Passive Attacks

There's no way to detect a passive attack because the hacker is not breaking into your network. He is simply listening (eavesdropping, if you will) to the information your network broadcasts. There are applications easily available on the Internet that can allow a person to listen into your wireless network and the information it broadcasts. Information such as MAC addresses, IP addresses, usernames, passwords, instant message conversations, emails, account information, and any data transmitted wirelessly, can easily be seen by someone outside of your network because it is often broadcast in clear text. Simply put, any information transmitted on a wireless network leaves both the network and individual users vulnerable to attack. All a hacker needs is a "packet sniffer", software available on the Internet, along with other freeware or shareware hacking utilities available on the Internet, to acquire your WEP keys and other network information to defeat security.

Jamming Attacks

Jamming Attacks, when a powerful signal is sent directly into your wireless network, can effectively shut down your wireless network. This type of attack is not always intentional and can often come about simply due to the technology. This is especially possible in the 2.4 GHz frequency, where phones, baby monitors, and microwave ovens can create a great deal of interference and jam transmissions on your wireless network. One way to resolve this is by moving your wireless devices into the 5 GHz frequency, which is dedicated solely to information transmissions.

Active Attacks

Hackers use Active Attacks for three purposes: 1) stealing data, 2) using your network, and 3) modifying your network so it's easier to hack in the next time.

In an Active Attack, the hacker has gained access to all of your network settings (SSID, WEP keys, etc.) and is in your network. Once in your wireless network, the hacker has access to all open resources and transmitted data on the network. In addition, if the wireless network's access point is connected to a switch, the hacker will also have access to data in the wired network.

Further, spammers can use your Internet connection and your ISP's mail server to send tens of thousands of e-mails from your network without your knowledge.

Lastly, the hacker could make hacking into your network even easier by changing or removing safeguards such as MAC address filters and WEP encryption. He can even steal passwords and user names for the next time he wants to hack in.

Dictionary-Building or Table Attacks

Dictionary-building, or Table attacks, is a method of gaining network settings (SSID, WEP keys, etc.) by analyzing about a day's worth of network traffic, mostly in the case of business networks. Over time, the hacker can build up a table of network data and be able to decrypt all of your wireless transmissions. This type of attack is more effective with networks that transmit more data, such as businesses.

Man-in-the-Middle Attacks

A hacker doesn't need to log into your network as a user - he can appear as one of the network's own access points, setting himself up as the man-in-the-middle. To do this, the hacker simply needs to rig an access point with your network's settings and send out a stronger signal than your access point. In this way, some of your network's PCs may associate with this rogue access point, not knowing the difference, and may begin sending data through it and to this hacker.

The trade-off for the convenience and flexibility wireless networking provides is the possibility of being hacked into through one of the methods described here. With wireless networks, even with WEP encryption, open to the persistent hacker, how can you protect your data? The following section will tell you how to do just that.

Maximizing Wireless Security

Security experts will all tell you the same thing: Nothing is guaranteed. No technology is secure by itself. An unfortunate axiom is that building the better mousetrap can often create a better mouse. This is why, in the

examples below, your implementation and administration of network security measures is the key to maximizing wireless security.

No preventative measure will guarantee network security but it will make it more difficult for someone to hack into your network. Often, hackers are looking for an easy target. Making your network less attractive to hackers, by making it harder for them to get in, will make them look elsewhere.

How do you do this? Before discussing WEP and WPA, let's look at a few security measures often overlooked.

A. Common Sense Solutions

1) Network Content

Now that you know the risks assumed when networking wirelessly, you should view wireless networks as you would the Internet. Don't host any systems or provide access to data on a wireless network that you wouldn't put on the Internet.

2) Network Layout

When you first lay out your network, keep in mind where your wireless PCs are going to be located and try to position your access point(s) towards the center of that network radius. Remember that access points transmit indiscriminately in a radius; placing an access point at the edge of the physical network area reduces network performance and leaves an opening for any hacker smart enough to discover where the access point is transmitting.

This is an invitation for a man-in-the-middle attack, as described in the previous section. To perform this type of attack, the hacker has to be physically close to your network. So, monitoring both your network and your property is important. Furthermore, if you are suspicious of unauthorized network traffic, most wireless products come with a log function, with which you can view activity on your network and verify if any unauthorized users have had access.

3) Network Devices

With every wireless networking device you use, keep in mind that network settings (SSID, WEP keys, etc.) are stored in its firmware. If they get into the hands of a hacker, so do all of your settings. So keep an eye on them.

4) Administrator passwords

Your network administrator is the only person who can change network settings. If a hacker gets a hold of the administrator's password, he, too, can change those settings. So, make it harder for a hacker to get that information. Change the administrator's password regularly.

5) SSID

There are a few things you can do to make your SSID more secure:

- a. Disable Broadcast
- b. Make it unique
- c. Change it often

Most wireless networking devices will give you the option of broadcasting the SSID. This is a option for convenience, allowing anyone to log into your wireless network. In this case, however, anyone includes hackers. So don't broadcast the SSID.

A default SSID is set on your wireless devices by the factory. (The Linksys default SSID is "linksys".) Hackers know these defaults and can check these against your network. Change your SSID to something unique and not something related to your company or the networking products you use.

Changing your SSID regularly will force any hacker attempting to gain access to your wireless network to start looking for that new SSID.

With these three steps in mind, please remember that while SSIDs are good for segmenting networks, they fall short with regards to security. Hackers can usually find them quite easily.

6) MAC addresses

Enable MAC address filtering if your wireless products allow it. MAC address filtering will allow you to provide access to only those wireless nodes with certain MAC addresses. This makes it harder for a hacker using a random MAC address or spoofing (faking) a MAC address.

7) Firewalls

Once a hacker has broken into your wireless network, if it is connected to your wired network, they'll have access to that, too. This means that the hacker has effectively used your wireless network as a backdoor through your firewall, which you've put in place to protect your network from just this kind of attack via the Internet.

You can use the same firewall technology to protect your wired network from hackers coming in through your wireless network as you did for the Internet. Rather than connecting your access point to an unprotected switch, swap those out for a router with a built-in firewall. The router will show the access point coming in through its WAN port and its firewall will protect your network from any transmissions entering via your wireless network.

PCs unprotected by a firewall router should at least run firewall software, and all PCs should run up-to-date antiviral software.

B. WEP

Wired Equivalent Privacy (WEP) is often looked upon as a panacea for wireless security concerns. This is overstating WEP's ability. Again, this can only provide enough security to make a hacker's job more difficult.

WEP encryption implementation was not put in place with the 802.11 standard. This means that there are about as many methods of WEP encryption as there are providers of wireless networking products. In addition, WEP is not completely secure. One piece of information still not encrypted is the MAC address, which hackers can use to break into a network by spoofing (or faking) the MAC address.

Programs exist on the Internet that are designed to defeat WEP. The best known of these is AirSnort. In about a day, AirSnort can analyze enough of the wireless transmissions to crack the WEP key. Just like a dictionary-building attack, the best prevention for these types of programs is by not using static settings, periodically changing WEP keys, SSID, etc.

There are several ways that WEP can be maximized:

- a) Use the highest level of encryption possible
- b) Use multiple WEP keys
- c) Change your WEP key regularly

Current encryption technology offers 64-bit and 128-bit WEP encryption. If you are using 64-bit WEP, swap out your old wireless units for 128-bit encryption right away. Where encryption is concerned, the bigger and more complex, the better. A WEP key is a string of hexadecimal characters that your wireless network uses in two ways. First, nodes in your wireless network are identified with a common WEP key. Second, these WEP keys encrypt and decrypt data sent over your wireless network. So, a higher level of security ensures that hackers will have a harder time breaking into your network.

Setting one, static WEP key on your wireless network leaves your network open the threats even as you think it is protecting you. While it is true that using a WEP key increases wireless security, you can increase it further by using multiple WEP keys.

Keep in mind that WEP keys are stored in the firmware of wireless cards and access points and can be used to hack into the network if a card or access point falls into the wrong hands. Also, should someone hack into your network, there would be nothing preventing someone access to the entire network, using just one static key.

The solution, then, is to segment your network up into multiple groups. If your network had 80 users and you used four WEP keys, a hacker would have access to only ¼ of your wireless network resources. In this way, multiple keys reduce your liability.

Finally, be sure to change your WEP key regularly, once a week or once a day. Using a “dynamic” WEP key, rather than one that is static, makes it even harder for a hacker to break into your network and steal your resources.

WEP Encryption

WEP encryption for the Router is configured through the Web-Utility's Security tab. Select **WEP** from the drop-down menu of Security Mode, which will open the WEP screen, shown in Figure B-2.

Select which WEP key (1-4) will be used when the Router sends data, then select that number as the Default Transmit Key. Make sure the receiving device is using the same key.

If you wish to use a WEP Passphrase, it can be a maximum of 16 alphanumeric characters. This passphrase may not work with non-Linksys products due to possible incompatibility with other vendors' passphrase generators. The WEP Key can be generated using your Passphrase or you can enter it manually.

If you wish to enter the WEP Key manually, type the key into the appropriate Key field on the left. The WEP key must consist of the letters “A” through “F” and the numbers “0” through “9” and should be 10 characters in length for 64-bit encryption or 26 characters in length for 128-bit encryption. All points in your wireless network must use the same WEP key to utilize WEP encryption.

Once the Passphrase is entered, click the **Generate** key to generate a WEP key.

Click the Save Settings button to apply your changes and return to the Setup tab or Cancel Changes to cancel your changes.

C. WPA

Wi-Fi Protected Access (WPA) is the newest and best available standard in Wi-Fi security. Two modes are available: Pre-Shared Key and RADIUS. Pre-Shared Key gives you a choice of two encryption methods: TKIP (Temporal Key Integrity Protocol), which utilizes a stronger encryption method and incorporates Message Integrity Code (MIC) to provide protection against hackers, and AES (Advanced Encryption System), which utilizes a symmetric 128-Bit block data encryption. RADIUS (Remote Authentication Dial-In User Service) utilizes a RADIUS server for authentication and the use of dynamic TKIP, AES, or WEP.

WPA is accessed through the Web-Utility's Security Tab. Choose one of the following Security Modes from the drop-down menu:



Important: Always remember that each point in your wireless network **MUST** use the same WEP Encryption method and encryption key or your wireless network will not function properly.



Figure B-2: WEP



Figure B-3: Pre-Shared Key

WPA Pre-Shared Key

If you do not have a RADIUS server, Select the type of algorithm, TKIP or AES, enter a password in the Pre-Shared key field of 8-32 characters, and enter a Group Key Renewal period time between 0 and 99,999 seconds, which instructs the Router how often it should change the encryption keys.

WPA RADIUS

WPA used in coordination with a RADIUS server. (This should only be used when a RADIUS server is connected to the Router.) First, select the type of WPA algorithm, TKIP or AES. Enter the RADIUS server's IP Address and port number, along with a key shared between the Router and the server. Last, enter a Group Key Renewal period, which instructs the Router how often it should change the encryption keys.

RADIUS

WEP used in coordination with a RADIUS server. (This should only be used when a RADIUS server is connected to the Router.) First, enter the RADIUS server's IP Address and port number, along with a key shared between the Router and the server. Then, select a WEP key and a level of WEP encryption, and either generate a WEP key through the Passphrase or enter the WEP key manually.



Figure B-4: WPA Radius

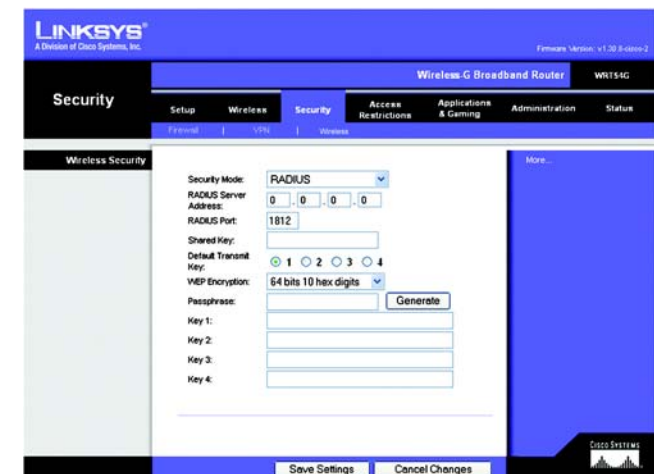


Figure B-5: Radius

Appendix C: Upgrading Firmware

The Router's firmware is upgraded through the Web-Utility's Help tab. Follow these instructions:

1. Download the firmware from Linksys's website at www.linksys.com.
2. Click **Upgrade Firmware** from the Web-Utility's Administration tab, and the Upgrade Firmware screen, shown in Figure C-1, will appear.
3. Enter the location of the firmware's file or click the **Browse** button to find the file.
4. Then, click the **Upgrade** button to upgrade the firmware.



Figure C-1: Upgrade Firmware

Appendix D: Windows Help

All wireless products require Microsoft Windows. Windows is the most used operating system in the world and comes with many features that help make networking easier. These features can be accessed through Windows Help and are described in this appendix.

TCP/IP

Before a computer can communicate with the Router, TCP/IP must be enabled. TCP/IP is a set of instructions, or protocol, all PCs follow to communicate over a network. This is true for wireless networks as well. Your PCs will not be able to utilize wireless networking without having TCP/IP enabled. Windows Help provides complete instructions on enabling TCP/IP.

Shared Resources

If you wish to share printers, folder, or files over your network, Windows Help provides complete instructions on utilizing shared resources.

Network Neighborhood/My Network Places

Other PCs on your network will appear under Network Neighborhood or My Network Places (depending upon the version of Windows you're running). Windows Help provides complete instructions on adding PCs to your network.

Appendix E: Finding the MAC Address and IP Address for Your Ethernet Adapter

This section describes how to find the MAC address for your computer's Ethernet adapter so you can use the MAC filtering and/or MAC address cloning feature of the Router. You can also find the IP address of your computer's Ethernet adapter. This IP address is used for the Router's filtering, forwarding, and/or DMZ features. Follow the steps in this appendix to find the adapter's MAC or IP address in Windows 98, Me, 2000, or XP.

Windows 98 or Me Instructions

1. Click **Start** and **Run**. In the *Open* field, enter `winipcfg`. Then press the **Enter** key or the **OK** button.
2. When the *IP Configuration* screen appears, select the Ethernet adapter you have connected to the Router via a CAT 5 Ethernet network cable. See Figure C-1.
3. Write down the Adapter Address as shown on your computer screen (see Figure C-2). This is the MAC address for your Ethernet adapter and is shown as a series of numbers and letters.

The MAC address/Adapter Address is what you will use for MAC address cloning or MAC filtering.

The example in Figure C-3 shows the Ethernet adapter's IP address as 192.168.1.100. Your computer may show something different.



Note: The MAC address is also called the Adapter Address.

Windows 2000 or XP Instructions

1. Click **Start** and **Run**. In the *Open* field, enter `cmd`. Press the **Enter** key or click the **OK** button.
2. At the command prompt, enter `ipconfig /all`. Then press the **Enter** key.

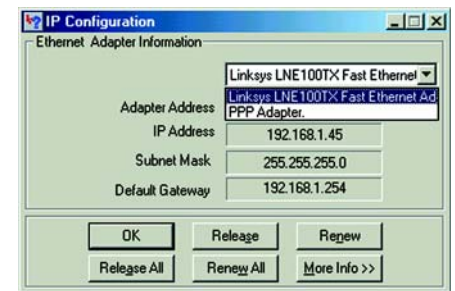


Figure E-1: IP Configuration Screen

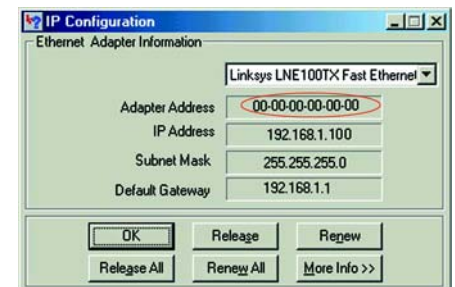


Figure E-2: MAC Address/Adapter Address

3. Write down the Physical Address as shown on your computer screen (Figure C-3); it is the MAC address for your Ethernet adapter. This appears as a series of numbers and letters.

The MAC address/Physical Address is what you will use for MAC address cloning or MAC filtering.



Note: The MAC address is also called the Physical Address.

The example in Figure C-3 shows the Ethernet adapter's IP address as 192.168.1.100. Your computer may show something different.

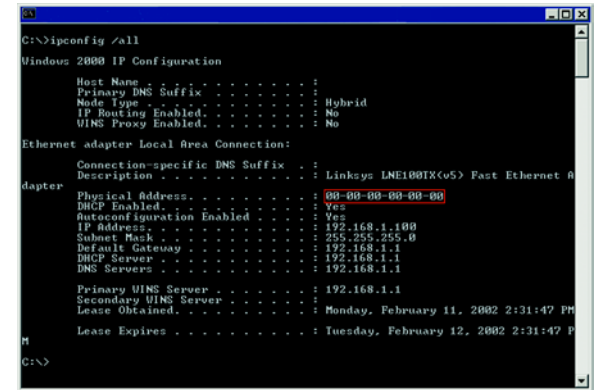


Figure E-3: MAC Address/Physical Address

For the Router's Web-based Utility

For MAC filtering, enter the 12-digit MAC address in this format, XXXXXXXXXXXX, WITHOUT the hyphens. See Figure C-4.

For MAC address cloning, enter the 12-digit MAC address in the *MAC Address* fields provided, two digits per field. See Figure C-5.

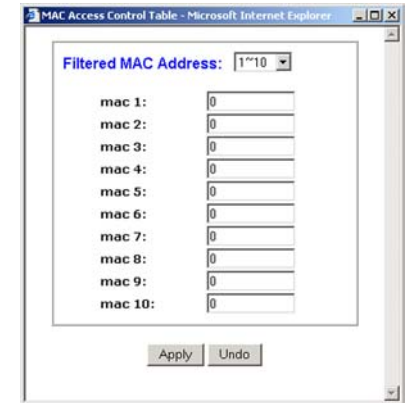


Figure E-4: MAC Address Filter



Figure E-5: MAC Address Clone

Appendix F: Glossary

802.11a - An IEEE wireless networking standard that specifies a maximum data transfer rate of 54Mbps and an operating frequency of 5GHz.

802.11b - An IEEE wireless networking standard that specifies a maximum data transfer rate of 11Mbps and an operating frequency of 2.4GHz.

802.11g - An IEEE wireless networking standard that specifies a maximum data transfer rate of 54Mbps, an operating frequency of 2.4GHz, and backward compatibility with 802.11b devices.

Access Point - Device that allows wireless-equipped computers and other devices to communicate with a wired network. Also used to expand the range of a wireless network.

Adapter - This is a device that adds network functionality to your PC.

Ad-hoc - A group of wireless devices communicating directly with each other (peer-to-peer) without the use of an access point.

Backbone - The part of a network that connects most of the systems and networks together, and handles the most data.

Bandwidth - The transmission capacity of a given device or network.

Beacon Interval - The frequency interval of the beacon, which is a packet broadcast by a router to synchronize a wireless network.

Bit - A binary digit.

Boot - To start a device and cause it to start executing instructions.

Bridge - A device that connects two different kinds of local networks, such as a wireless network to a wired Ethernet network.

Broadband - An always-on, fast Internet connection.

Browser - A browser is an application program that provides a way to look at and interact with all the information on the World Wide Web.

Wireless-G Broadband Router

Buffer - A block of memory that temporarily holds data to be worked on later when a device is currently too busy to accept the data.

Cable Modem - A device that connects a computer to the cable television network, which in turn connects to the Internet.

CSMA/CA (Carrier Sense Multiple Access/Collision Avoidance) - A method of data transfer that is used to prevent data loss in a network.

CTS (Clear To Send) - A signal sent by a device to indicate that it is ready to receive data.

Daisy Chain - A method used to connect devices in a series, one after the other.

Database - A collection of data that is organized so that its contents can easily be accessed, managed, and updated.

DDNS (Dynamic Domain Name System) - The capability of having a website, FTP, or e-mail server-with a dynamic IP address-use a fixed domain name.

Default Gateway - A device that forwards Internet traffic from your local area network.

DHCP (Dynamic Host Configuration Protocol) - A protocol that lets one device on a local network, known as a DHCP server, assign temporary IP addresses to the other network devices, typically computers.

DMZ (Demilitarized Zone) - Removes the Router's firewall protection from one PC, allowing it to be "seen" from the Internet.

DNS (Domain Name Server) - The IP address of your ISP's server, which translates the names of websites into IP addresses.

Domain - A specific name for a network of computers.

Download - To receive a file transmitted over a network.

DSL (Digital Subscriber Line) - An always-on broadband connection over traditional phone lines.

DSSS (Direct-Sequence Spread-Spectrum) - A type of radio transmission technology that includes a redundant bit pattern to lessen the probability of data lost during transmission. Used in 802.11b networking.

DTIM (Delivery Traffic Indication Message) - A message included in data packets that can increase wireless efficiency.

Dynamic IP Address - A temporary IP address assigned by a DHCP server.

Encryption - Encoding data to prevent it from being read by unauthorized people.

Ethernet - An IEEE standard network protocol that specifies how data is placed on and retrieved from a common transmission medium.

Finger - A program that tells you the name associated with an e-mail address.

Firewall - Security measures that protect the resources of a local network from intruders.

Firmware - 1. In network devices, the programming that runs the device. 2. Programming loaded into read-only memory (ROM) or programmable read-only memory (PROM) that cannot be altered by end-users.

Fragmentation - Breaking a packet into smaller units when transmitting over a network medium that cannot support the original size of the packet.

FTP (File Transfer Protocol) - A standard protocol for sending files between computers over a TCP/IP network and the Internet.

Full Duplex - The ability of a networking device to receive and transmit data simultaneously.

Gateway - A system that interconnects networks.

Half Duplex - Data transmission that can occur in two directions over a single line, but only one direction at a time.

Hardware - The physical aspect of computers, telecommunications, and other information technology devices.

HTTP (HyperText Transport Protocol) - The communications protocol used to connect to servers on the World Wide Web.

IEEE (The Institute of Electrical and Electronics Engineers) - An independent institute that develops networking standards.

Infrastructure - Currently installed computing and networking equipment.

Infrastructure Mode - Configuration in which a wireless network is bridged to a wired network via an access point.

IP (Internet Protocol) - A protocol used to send data over a network.

IP Address - The address used to identify a computer or device on a network.

Wireless-G Broadband Router

IPCONFIG - A Windows 2000 and XP utility that displays the IP address for a particular networking device.

IPSec (Internet Protocol Security) - A VPN protocol used to implement secure exchange of packets at the IP layer.

ISM band - Radio band used in wireless networking transmissions.

ISP (Internet Service Provider) - A company that provides access to the Internet.

LAN (Local Area Network) - The computers and networking products that make up the network in your home or office.

MAC (Media Access Control) Address - The unique address that a manufacturer assigns to each networking device.

Mbps (Megabits Per Second) - One million bits per second; a unit of measurement for data transmission.

Multicasting - Sending data to a group of destinations at once.

NAT (Network Address Translation) - NAT technology translates IP addresses of a local area network to a different IP address for the Internet.

Network - A series of computers or devices connected for the purpose of data sharing, storage, and/or transmission between users.

NNTP (Network News Transfer Protocol) - The protocol used to connect to Usenet groups on the Internet.

Node - A network junction or connection point, typically a computer or work station.

OFDM (Orthogonal Frequency Division Multiplexing) - A type of modulation technology that separates the data stream into a number of lower-speed data streams, which are then transmitted in parallel. Used in 802.11a, 802.11g, and powerline networking.

Packet - A unit of data sent over a network.

Passphrase - Used much like a password, a passphrase simplifies the WEP encryption process by automatically generating the WEP encryption keys for Linksys products.

Ping (Packet INternet Groper) - An Internet utility used to determine whether a particular IP address is online.

POP3 (Post Office Protocol 3) - A standard protocol used to retrieve e-mail stored on a mail server.

Port - 1. The connection point on a computer or networking device used for plugging in a cable or an adapter. 2. The virtual connection point through which a computer uses a specific application on a server.

Wireless-G Broadband Router

PPPoE (Point to Point Protocol over Ethernet) - A type of broadband connection that provides authentication (username and password) in addition to data transport.

PPTP (Point-to-Point Tunneling Protocol) - A VPN protocol that allows the Point to Point Protocol (PPP) to be tunneled through an IP network. This protocol is also used as a type of broadband connection in Europe.

Preamble - Part of the wireless signal that synchronizes network traffic.

RJ-45 (Registered Jack-45) - An Ethernet connector that holds up to eight wires.

Roaming - The ability to take a wireless device from one access point's range to another without losing the connection.

Router - A networking device that connects multiple networks together, such as a local network and the Internet.

RTS (Request To Send) - A packet sent when a computer has data to transmit. The computer will wait for a CTS (Clear To Send) message before sending data.

Server - Any computer whose function in a network is to provide user access to files, printing, communications, and other services.

SMTP (Simple Mail Transfer Protocol) - The standard e-mail protocol on the Internet.

SNMP (Simple Network Management Protocol) - A widely used network monitoring and control protocol.

Software - Instructions for the computer. A series of instructions that performs a particular task is called a "program".

Spread Spectrum - Wideband radio frequency technique used for more reliable and secure data transmission.

SSID (Service Set Identifier) - Your wireless network's name.

Static IP Address - A fixed address assigned to a computer or device that is connected to a network.

Static Routing - Forwarding data in a network via a fixed path.

Subnet Mask - An address code that determines the size of the network.

Switch - 1. Device that is the central point of connection for computers and other devices in a network, so data can be shared at full transmission speeds. 2. A device for making, breaking, or changing the connections in an electrical circuit.

Wireless-G Broadband Router

TCP/IP (Transmission Control Protocol/Internet Protocol) - A network protocol for transmitting data that requires acknowledgement from the recipient of data sent.

Telnet - A user command and TCP/IP protocol used for accessing remote PCs.

TFTP (Trivial File Transfer Protocol) - A version of the TCP/IP FTP protocol that uses UDP and has no directory or password capability.

Throughput - The amount of data moved successfully from one node to another in a given time period.

Topology - The physical layout of a network.

TX Rate - Transmission Rate.

UDP (User Datagram Protocol) - A network protocol for transmitting data that does not require acknowledgement from the recipient of the data that is sent.

Upgrade - To replace existing software or firmware with a newer version.

Upload - To transmit a file over a network.

URL (Uniform Resource Locator) - The address of a file located on the Internet.

VPN (Virtual Private Network) - A security measure to protect data as it leaves one network and goes to another over the Internet.

WAN (Wide Area Network) - The Internet.

WEP (Wired Equivalent Privacy) - A method of encrypting data transmitted on a wireless network for greater security.

WINIPCFG - A Windows 98 and Millennium utility that displays the IP address for a particular networking device.

WLAN (Wireless Local Area Network) - A group of computers and associated devices that communicate with each other wirelessly.

Appendix G: Specifications

Standards	IEEE 802.3, 802.3u, 802.11g and 802.11b
Channels	11 Channels (US, Canada) 13 Channels (most of Europe) 14 Channels (Japan)
Ports/Buttons	One 10/100 RJ-45 Internet Port, Four 10/100 RJ-45 Switched LAN Ports, One Power Port, One Reset Button
Cabling Type	UTP CAT 5 or better
Data Rate	Up to 54Mbps
Transmit Power	15dBm
LEDs	Power, DMZ, WLAN, LAN (1-4), Internet
Dimensions (L x W x H)	186 mm x 48 mm x 200 mm (7,31" x 1,89" x 7,87")
Unit Weight	0,482 kg (17 oz.)
Power	External, 12V DC, 1A
Certifications	FCC, IC-03, CE, WiFi, WPA
Operating Temp.	0°C to 40°C (32°F to 104°F)
Storage Temp.	-20°C to 70°C (-4°F to 158°F)
Operating Humidity	10% to 85% Non-Condensing
Storage Humidity	5% to 90% Non-Condensing

Appendix H: Warranty Information

LIMITED WARRANTY

Linksys warrants to the original end user purchaser ("You") that, for a period of three years, (the "Warranty Period") Your Linksys product will be free of defects in materials and workmanship under normal use. Your exclusive remedy and Linksys's entire liability under this warranty will be for Linksys at its option to repair or replace the product or refund Your purchase price less any rebates.

If the product proves defective during the Warranty Period call Linksys Technical Support in order to obtain a Return Authorization Number. BE SURE TO HAVE YOUR PROOF OF PURCHASE ON HAND WHEN CALLING. When returning a product, mark the Return Authorization Number clearly on the outside of the package and include a copy of your original proof of purchase. RETURN REQUESTS CANNOT BE PROCESSED WITHOUT PROOF OF PURCHASE. You are responsible for shipping defective products to Linksys. Linksys pays for UPS Ground shipping from Linksys back to You only. Customers located outside of the United States of America and Canada are responsible for all shipping and handling charges.

ALL IMPLIED WARRANTIES AND CONDITIONS OF MERCHANTABILITY OR FITNESS FOR A PARTICULAR PURPOSE ARE LIMITED TO THE DURATION OF THE WARRANTY PERIOD. ALL OTHER EXPRESS OR IMPLIED CONDITIONS, REPRESENTATIONS AND WARRANTIES, INCLUDING ANY IMPLIED WARRANTY OF NON-INFRINGEMENT, ARE DISCLAIMED. Some jurisdictions do not allow limitations on how long an implied warranty lasts, so the above limitation may not apply to You. This warranty gives You specific legal rights, and You may also have other rights which vary by jurisdiction.

TO THE EXTENT NOT PROHIBITED BY LAW, IN NO EVENT WILL LINKSYS BE LIABLE FOR ANY LOST DATA, REVENUE OR PROFIT, OR FOR SPECIAL, INDIRECT, CONSEQUENTIAL, INCIDENTAL OR PUNITIVE DAMAGES, HOWEVER CAUSED REGARDLESS OF THE THEORY OF LIABILITY, ARISING OUT OF OR RELATED TO THE USE OF OR INABILITY TO USE THE PRODUCT, EVEN IF LINKSYS HAS BEEN ADVISED OF THE POSSIBILITY OF SUCH DAMAGES. IN NO EVENT WILL LINKSYS' LIABILITY EXCEED THE AMOUNT PAID BY YOU FOR THE PRODUCT.

The foregoing limitations will apply even if any warranty or remedy provided under this Section fails of its essential purpose. Some jurisdictions do not allow the exclusion or limitation of incidental or consequential damages, so the above limitation or exclusion may not apply to You.

This Warranty is valid and may be processed only in the country of purchase.

Please direct all inquiries to: Linksys, P.O. Box 18558, Irvine, CA 92623 USA.

Appendix I: Regulatory Information

FCC STATEMENT

This product has been tested and complies with the specifications for a Class B digital device, pursuant to Part 15 of the FCC Rules. These limits are designed to provide reasonable protection against harmful interference in a residential installation. This equipment generates, uses, and can radiate radio frequency energy and, if not installed and used according to the instructions, may cause harmful interference to radio communications. However, there is no guarantee that interference will not occur in a particular installation. If this equipment does cause harmful interference to radio or television reception, which is found by turning the equipment off and on, the user is encouraged to try to correct the interference by one or more of the following measures:

- Reorient or relocate the receiving antenna
- Increase the separation between the equipment or devices
- Connect the equipment to an outlet other than the receiver's
- Consult a dealer or an experienced radio/TV technician for assistance

FCC Caution: Any change or modification to the product not expressly approved by Linksys could void the user's authority to operate the device.

FCC RF Radiation Exposure Statement

To comply with the FCC and ANSI C95.1 RF exposure limits, the antenna(s) for this device must comply with the following:

- Access points with 2.4 GHz or 5 GHz integrated antenna must operate with a separation distance of at least 20 cm from all persons using the cable provided and must not be co-located or operating in conjunction with any other antenna or transmitter.

End-users must be provided with specific operations for satisfying RF exposure compliance.

Note: Dual antennas used for diversity operation are not considered co-located.

Wireless-G Broadband Router

INDUSTRY CANADA (CANADA)

This Class B digital apparatus complies with Canadian ICES-003.

Cet appareil numérique de la classe B est conforme à la norme NMB-003 du Canada.

The use of this device in a system operating either partially or completely outdoors may require the user to obtain a license for the system according to the Canadian regulations.

EC DECLARATION OF CONFORMITY (EUROPE)

Linksys declares that the Wireless-G Broadband Router conforms to the specifications listed below, following the provisions of the European R&TTE directive 1999/5/EC:

For 2.4 GHz devices with 100 mW radios, the following standards were applied:

- EN 301 489-1, 301 489-17 General EMC requirements for Radio equipment.
- EN 609 50 Safety
- ETS 300-328-2 Technical requirements for Radio equipment.

Caution: This equipment is intended to be used in all EU and EFTA countries. Outdoor use may be restricted to certain frequencies and/or may require a license for operation. Contact local Authority for procedure to follow.

Note: Combinations of power levels and antennas resulting in a radiated power level of above 100 mW equivalent isotropic radiated power (EIRP) are considered as not compliant with the above mentioned directive and are not allowed for use within the European community and countries that have adopted the European R&TTE directive 1999/5/EC.

For more details on legal combinations of power levels and antennas, contact Linksys Corporate Compliance.

- Linksys vakuuttaa täten että Wireless-G Broadband Router tyyppinen laite on direktiivin 1999/5/EY oleellisten vaatimusten ja sitä koskevien näiden direktiivien muiden ehtojen mukainen.
- Linksys déclare que la Wireless-G Broadband Router est conforme aux conditions essentielles et aux dispositions relatives à la directive 1999/5/EC.
- Dans le cas d'une utilisation privée, à l'extérieur d'un bâtiment, au-dessus d'un espace public, aucun enregistrement n'est nécessaire pour une distance de moins de 300m. Pour une distance supérieure à 300m un enregistrement auprès de l'IBPT est requise. Pour une utilisation publique à l'extérieur de bâtiments, une licence de l'IBPT est requise. Pour les enregistrements et licences, veuillez contacter l'IBPT.

Wireless-G Broadband Router

- France F:

2.4 GHz Bande : les canaux 10, 11, 12, 13 (2457, 2462, 2467, et 2472 MHz respectivement) sont complètement libres d'utilisation en France (en utilisation intérieur). Pour ce qui est des autres canaux, ils peuvent être soumis à autorisation selon le département. L'utilisation en extérieur est soumise à autorisation préalable et très restreint.

Vous pouvez contacter l'Autorité de Régulation des Télécommunications (<http://www.art-telecom.fr>) pour de plus amples renseignements.

2.4 GHz Band: only channels 10, 11, 12, 13 (2457, 2462, 2467, and 2472 MHz respectively) may be used freely in France for indoor use. License required for outdoor installations.

Please contact ART (<http://www.art-telecom.fr>) for procedure to follow.

Chapter J: Contact Information

Need to contact Linksys?

Visit us online for information on the latest products and updates to your existing products at:
<http://www.linksys.com/international>

If you experience problems with any Linksys product, you can e-mail us at:

In Europe	E-mail Address
Austria	support.at@linksys.com
Belgium	support.be@linksys.com
Denmark	support.dk@linksys.com
France	support.fr@linksys.com
Germany	support.de@linksys.com
Italy	support.it@linksys.com
Netherlands	support.nl@linksys.com
Norway	support.no@linksys.com
Portugal	support.pt@linksys.com
Spain	support.es@linksys.com
Sweden	support.se@linksys.com
Switzerland	support.ch@linksys.com
United Kingdom & Ireland	support.uk@linksys.com

Outside of Europe	E-mail Address
Latin America	support.la@linksys.com
U.S. and Canada	support@linksys.com